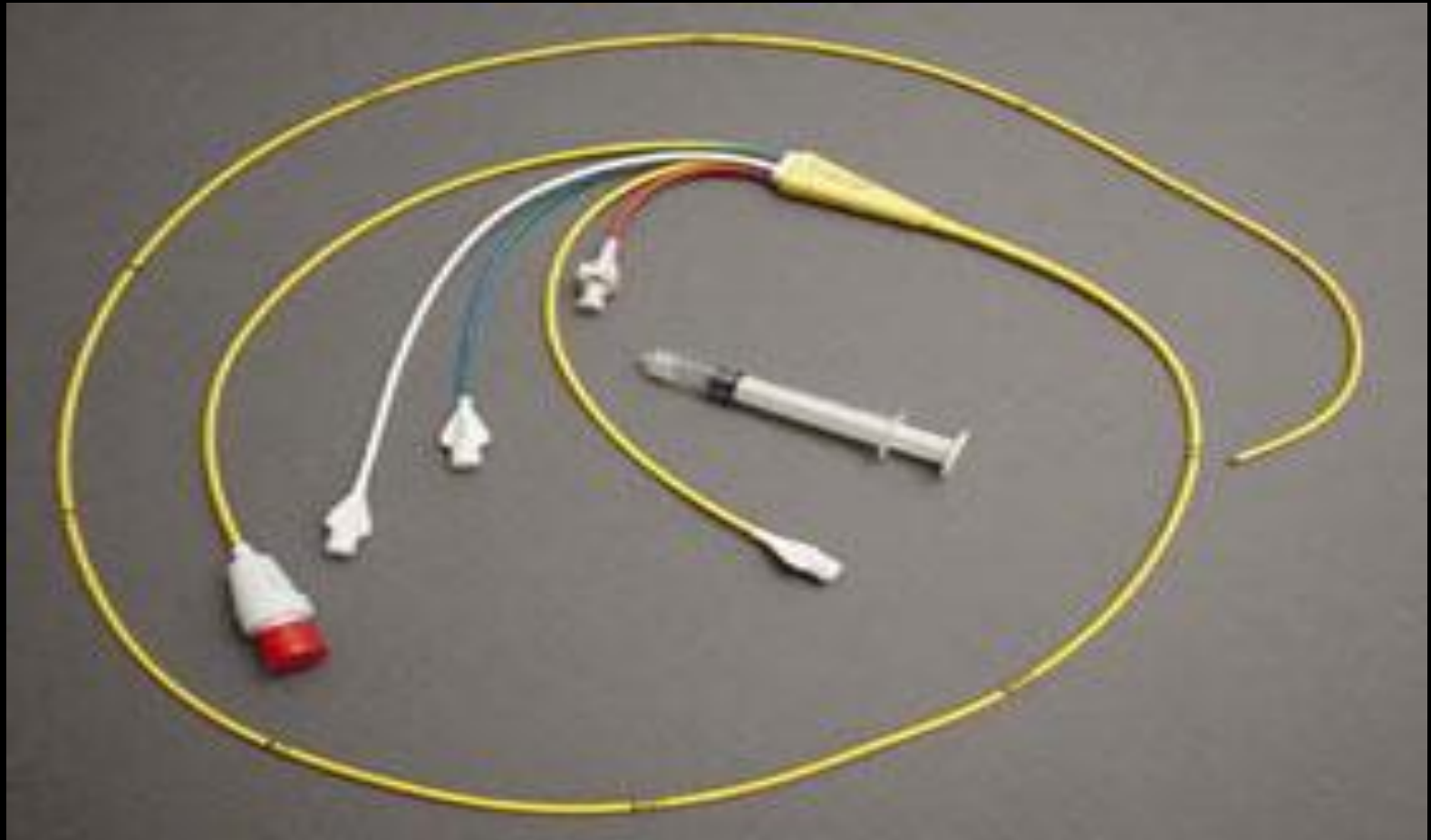


An aerial photograph of Tampa General Hospital's Aeromed helicopters. Two blue and yellow helicopters are positioned on a long, white cable-stayed bridge that spans across a body of water. The helicopters have 'Aeromed' and 'TGH Tampa General Hospital' written on their sides. The background shows a clear blue sky and the calm water of the bay.

Pulmonary Artery Catheter Transports

Jotham Keffeler BSN, RN, EMT-P, CFRN
Tampa General Hospital
Aeromed

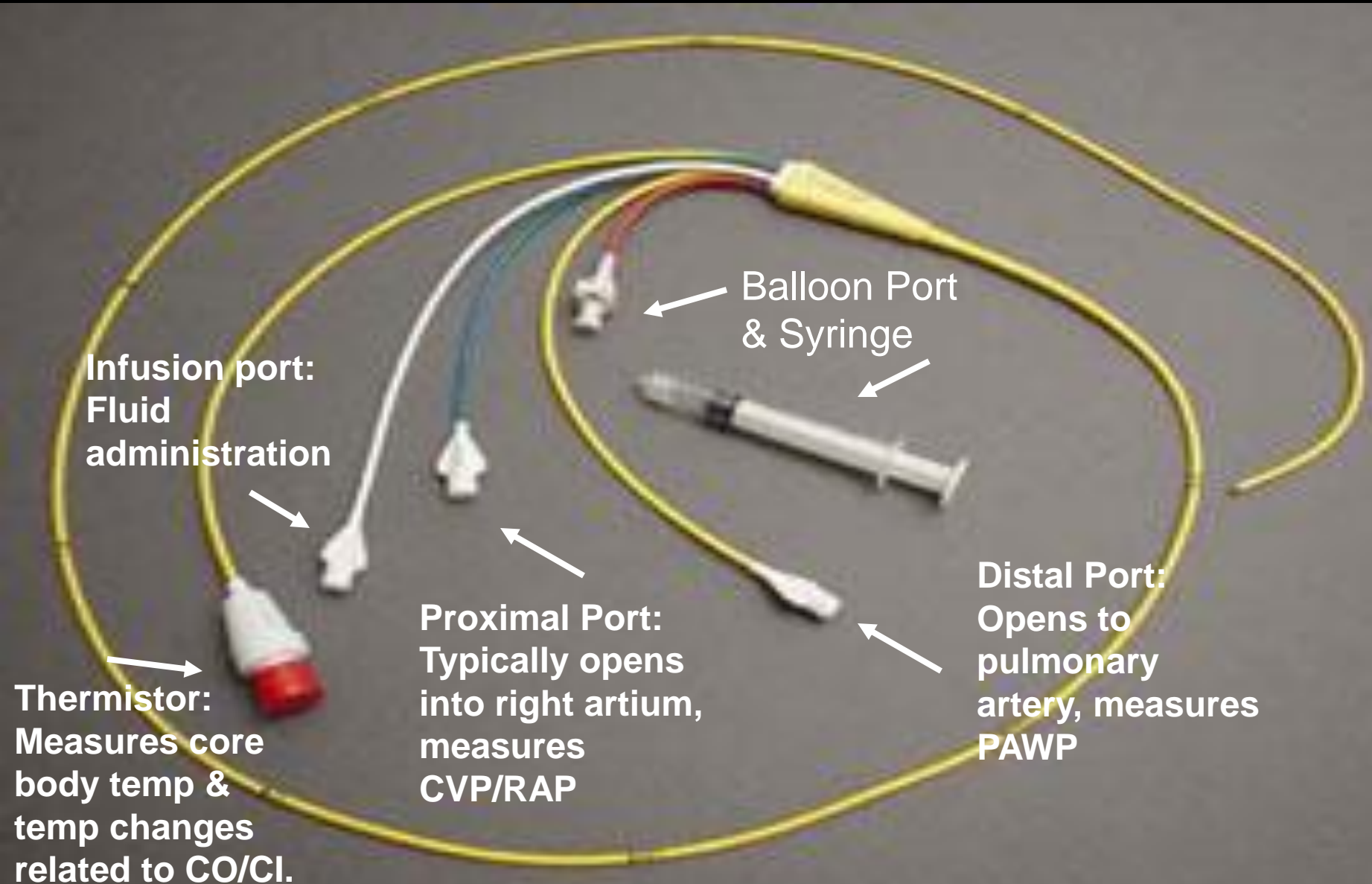
Pulmonary Artery Catheter Components (Swan-Ganz)



Pulmonary Artery Catheter Components (Swan-Ganz)

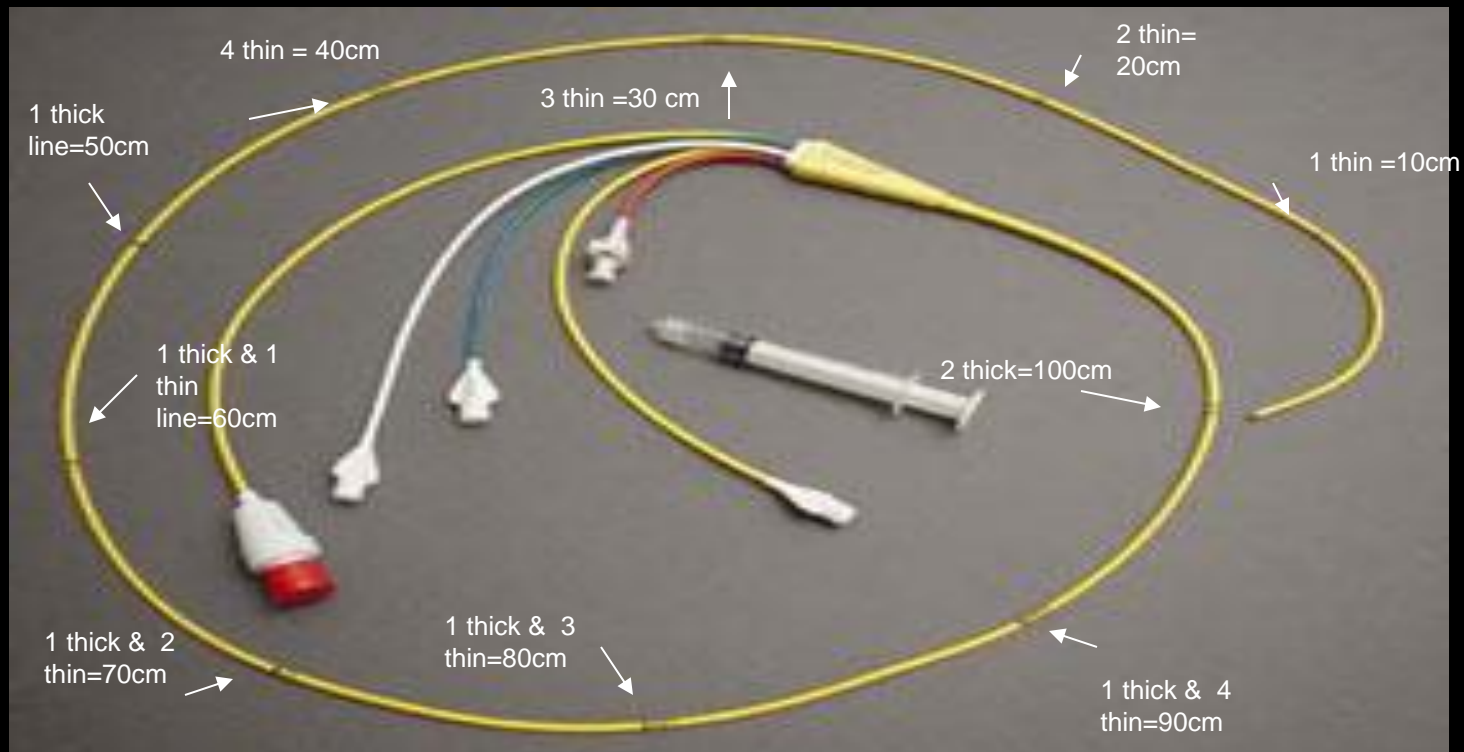
- Traditionally has 4 ports.
 - Proximal port (**Blue**)= used to measure CVP/RAP and injection port for measurement of cardiac output.
 - Distal port (**Yellow**)= used to measure PAP.
 - Balloon port (**Red**)= used to determine PAWP (special 1.5cc syringe connected).
 - Infusion port (**White**)= used for fluid infusions.

Pulmonary Artery Catheter Components (Swan-Ganz)

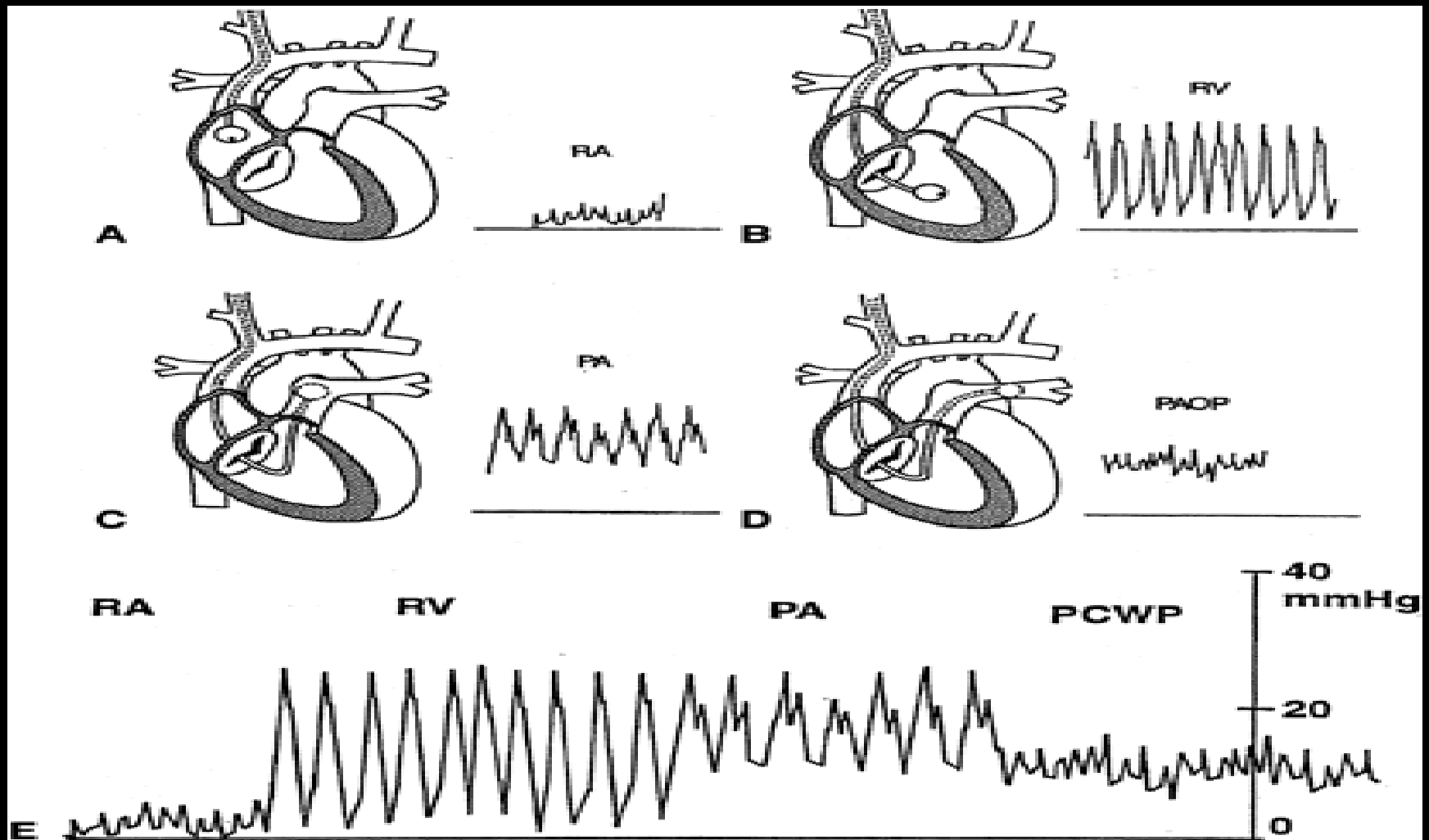


Pulmonary Artery Catheter Components (Swan-Ganz)

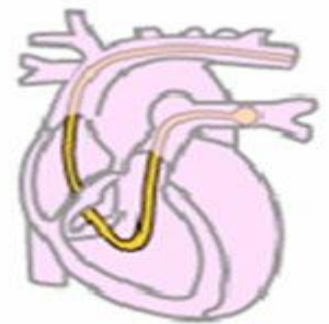
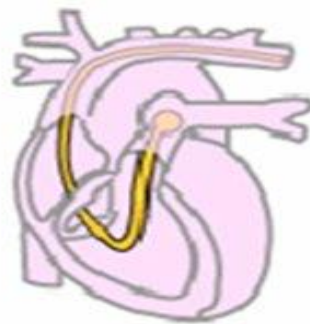
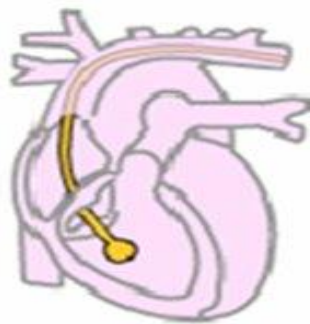
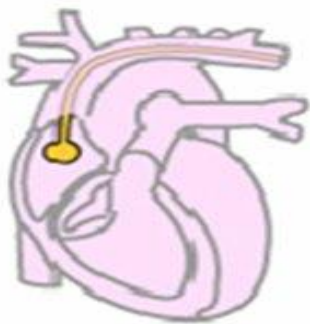
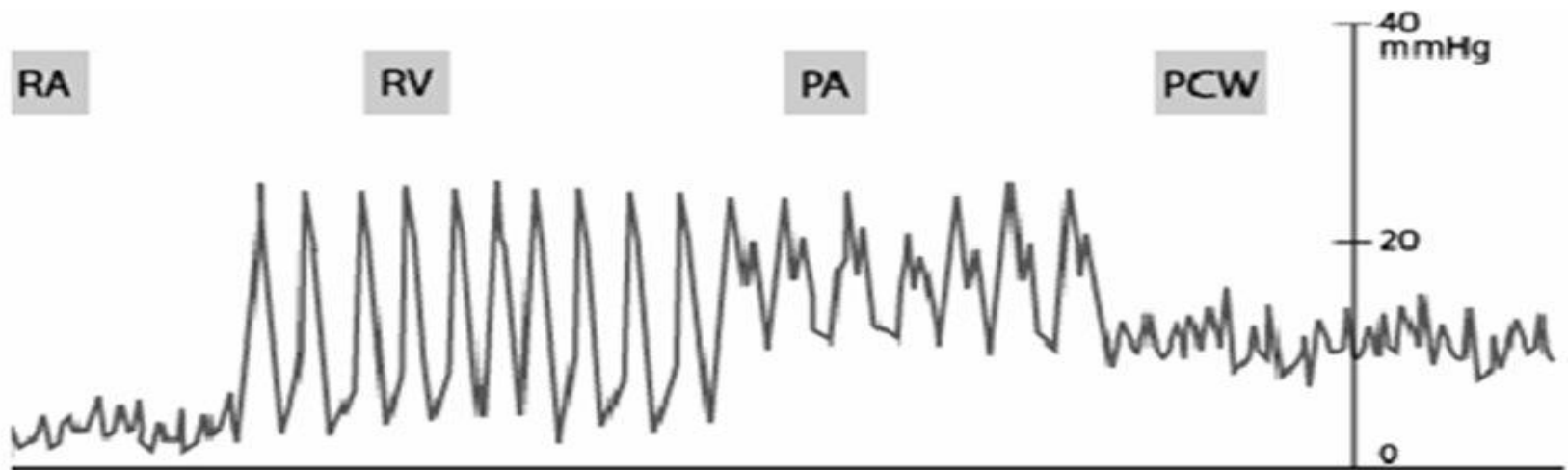
- Catheter Markings/Measurement
 - Thick (Wide) lines Black= 50cm (typically).
 - Thin (Narrow) lines Black= 10cm (typically).
- Measured at hub of Cordis/Introducer.
- In-between measurements are approximated.



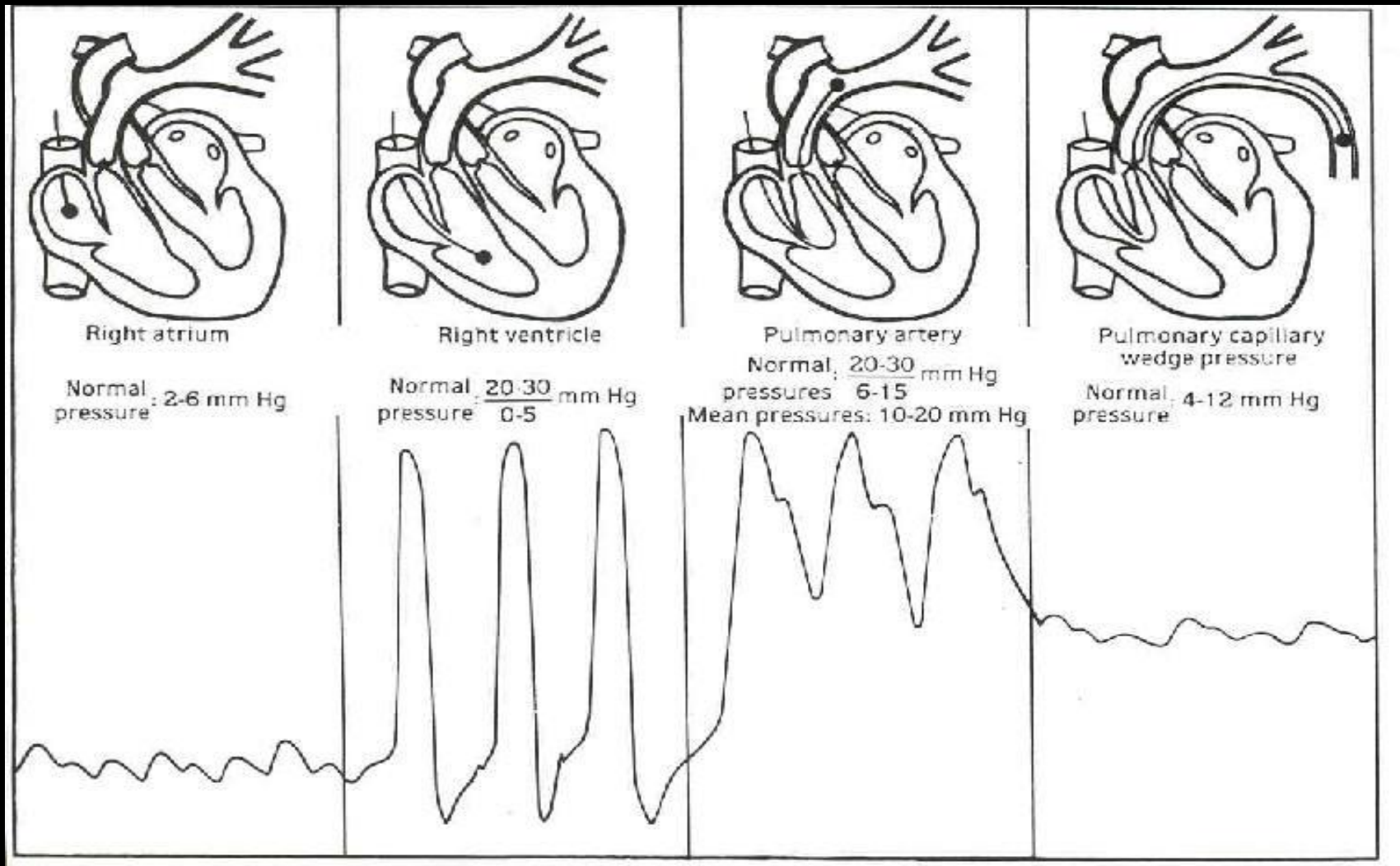
Sample Ideal Waveform



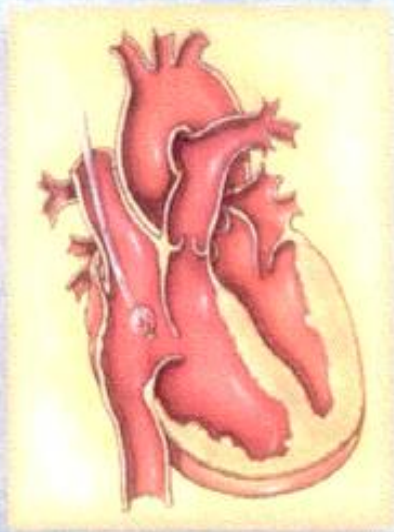
Sample Ideal Waveform



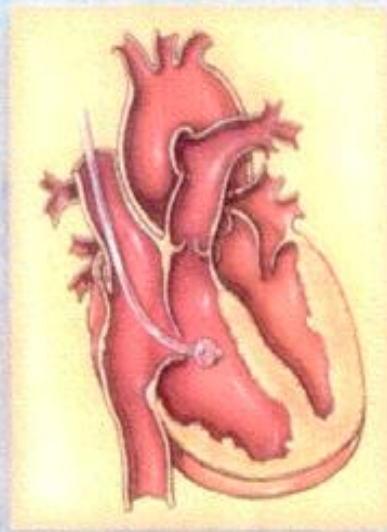
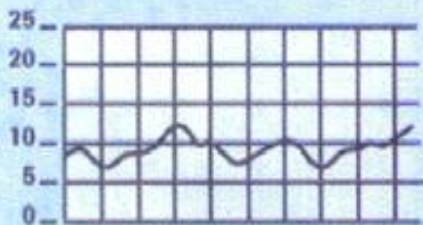
Sample Ideal Waveform



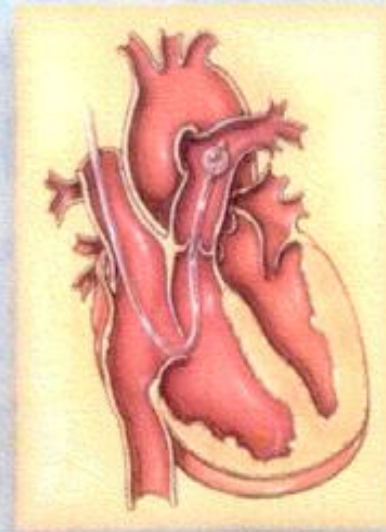
Sample Ideal Waveform



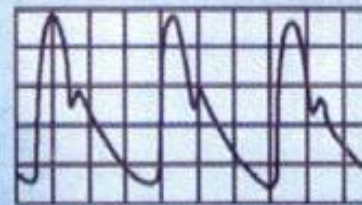
Right atrial (RA) pressure



Right ventricular (RV) pressure



Pulmonary artery pressure (PAP)



Pulmonary artery wedge pressure (PAWP)



Aeromed In-flight Hemodynamic Monitoring

- Recommended to transduce and monitor Pulmonary Artery Pressure (PAP) In-flight (Distal Port).
 - Remember altitude may effect pressures (re-zero transducer).
 - Normal PAP= 8-25 mmHg
- Record catheter “cm” markings at initial assessment and disposition.

Aeromed In-flight Hemodynamic Port Use

- Infusion Port (typically white)- Preferred medication and fluid administration port.
- Balloon Port (typically red)- Make sure balloon is deflated.
 - Passive deflation= Detach syringe and check for PAP waveform (never aspirate or inject anything into balloon).
 - Re-attach empty syringe and leave in place.

THE

END