

Preceptor Profiles and Rotation Descriptions

Internal Medicine

Preceptor(s): Kara Roelse, PharmD; Amanda Tse, PharmD; Michael Verbosky, PharmD, BCPS

Rotation Description:

Residents on the internal medicine rotation will provide pharmacotherapeutic care for the patients admitted on primary care, complex medicine, or similar units. The internal medicine service consists of the house staff internal medicine and specialty services (USF Teams) as well as private provider groups. Pharmacy residents will be involved with drug therapy management of all patients followed from admission to discharge. Core components of the rotation include but are not limited to the identification of potential drug therapy problems, comprehensive review or initiation of drug regimens, therapeutic drug monitoring, informal drug information service, and patient counseling. At the beginning of the rotation, the preceptor will review the pharmacy resident's baseline clinical knowledge. Learning experiences will be focused on areas of opportunity and common disease states as able. The pharmacy resident will be responsible for evaluation of evidence-based guidelines and pertinent literature during the rotation. The resident will gain extensive experience in internal medicine through structured learning experiences and independent practice.

Kara Roelse, PharmD

Clinical Pharmacist

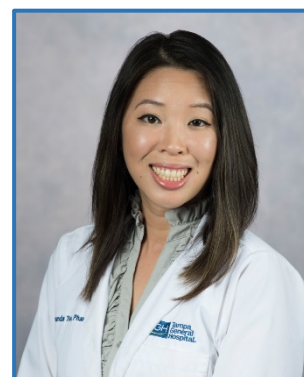
Dr. Roelse received her doctor of pharmacy degree from Albany College of Pharmacy in 2007 and completed an ASHP-accredited pharmacy practice residency at Tampa General Hospital. Upon finishing the residency program, she transitioned into the role of a clinical staff pharmacist at Tampa General Hospital. Dr. Roelse is responsible for providing pharmaceutical care to patients in the gastrointestinal medicine/surgery unit, including managing parenteral nutrition and anti-infective pharmacokinetics. She precepts pharmacy interns as well as pharmacy practice residents and is frequently involved in the education of healthcare providers. She is an active member of the American College of Clinical Pharmacists and the American Society of Health-Systems Pharmacists.



Amanda Tse, PharmD

Student and Intern Program Coordinator/Clinical Pharmacist

Dr. Tse received her doctor of pharmacy degree from the University of Florida College of Pharmacy in 2014 and completed an ASHP-accredited pharmacy practice residency at the Veterans Affairs Southern Nevada Healthcare System in Las Vegas, NV. Upon completion of her residency, Dr. Tse joined Tampa General Hospital as a clinical pharmacist, primarily providing care to patients in complex medicine and primary care units. Serving as the site liaison between multiple colleges of pharmacy, Dr. Tse is the coordinator for student programs and oversees the longitudinal internship program. She has a special interest in developing clinical education for pharmacy services. Dr. Tse is involved in various department committees, pilot programs, and is an active member on the Residency Advisory Committee. She is also a teaching preceptor and offers rotations for PGY1 residents, students, and interns.





Preceptor Profiles and Rotation Descriptions

Michael Verbosky, PharmD, BCPS

PGY1 Co Residency Director/Clinical Pharmacist

Dr. Verbosky received his doctor of pharmacy degree from the University of Florida College of Pharmacy in 2012 and completed an ASHP-accredited pharmacy practice residency at Tampa General Hospital. Upon finishing the residency program, he transitioned into the role of a clinical staff pharmacist at Tampa General Hospital where he worked in Critical Care and Hematology/Oncology. He worked for two years in that role before transitioning to Co-Residency Director of the PGY 1 Program. Dr. Verbosky is responsible for providing care to hematology/oncology patients in the infusion center and in the hospital. He precepts PGY1 residents, serves as a staffing and research advisor, and is an active member on the Residency Advisory Committee. He also precepts students and interns. His practice interests include oncology, pharmacy informatics, and administration. He is an active member of the American Society of Health-Systems Pharmacists and attends the Midyear Meeting.



Ambulatory Care

Preceptor(s): Jessica Bianco, PharmD, BCACP, BCPS, CACP, CPh; Nishi Karamsadkar, PharmD, BCACP, CPh; Amanda Martinez, PharmD, BCACP, CPh;

Rotation Description: Residents on the ambulatory care rotation will provide education and management of ambulatory care based disease states, including, but not limited to, anticoagulation, diabetes, transitions of care and medication therapy management. The resident will be responsible for providing pharmaceutical care to patients in the TGMG clinics based on the current collaborative practice agreement in place. In addition, the resident will provide medication education to patients, inservices for the staff and answer drug information questions. The resident will also have the opportunity to enhance their precepting/teaching skills while on the ambulatory care rotation and serve as the primary preceptor to students. The resident will lead the “Diabetes Self-management” class that occurs each month. Evaluation of pertinent literature and discussion of guideline-based care will also occur.

Jessica Bianco, PharmD, BCPS, CACP, CPh

Pharmacotherapy Specialist, Ambulatory Care

Jessica Bianco received her doctor of pharmacy degree from Nova Southeastern University College of Pharmacy in 2001. After graduation, she completed an ASHP accredited PGY2 residency in ambulatory care at Bay Pines VAMC in St. Petersburg, FL. Dr. Bianco began her clinical practice at Tampa General Hospital in 2002, focusing primarily on inpatient psychiatry. In 2003, Dr. Bianco started ambulatory pharmacy services at Healthpark and Kennedy clinics, thus shifting her practice solely to primary care. As a pharmacotherapy specialist in ambulatory care, her current clinical practice responsibilities include management of the anticoagulation clinic, managing patients with uncontrolled type 2 diabetes, medication review for new patients, patients recently discharged from the hospital, and patient teaching/education. Dr. Bianco has been instrumental in expanding ambulatory care pharmacy services to three full time pharmacists and three part-time faculty members. In addition, she serves as the consultant pharmacist of record for all of TGMG Clinics at Tampa General Hospital. Dr. Bianco also serves as an ambulatory care clerkship preceptor for the University of Florida and LECOM College of Pharmacy and an ambulatory care residency preceptor for the Tampa General Hospital PGY1 residency program. Dr. Bianco is a board certified pharmacotherapy specialist and certified anticoagulation care provider. She is a member of the AC forum, ACCP and ASHP. Her teaching and research interests include hyperlipidemia, anticoagulation, diabetes, transitions of care and telehealth pharmacy services



Preceptor Profiles and Rotation Descriptions

Amanda Martinez, PharmD, BCACP, CPh

Clinical Pharmacist

Dr. Amanda Martinez received her doctor of pharmacy degree from Mercer University in Atlanta, GA in 2011. The following year, she completed an ASHP-accredited residency focused on primary care at Bay Pines Veterans Affairs Medical Center in St. Petersburg, FL. Dr. Martinez began her clinical practice at Tampa General Hospital in 2012 as a staff clinical pharmacist in the emergency department and operating room pharmacy. As pharmacy ambulatory services expanded at the Tampa General Medical Group (TGMG) clinics in May 2013, Dr. Martinez began working as an ambulatory care clinical pharmacist at the TGMG Brandon Family Care Center, which is a NCQA-certified patient centered medical home (PCMH). Through a collaborative practice agreement, she manages complex anticoagulation and diabetic patients. She also provides transitional care management services and complete medication reviews for high-risk patients at the PCMH. Dr. Martinez serves as an ambulatory care clerkship preceptor for local pharmacy schools and serves as one of the ambulatory care residency preceptors for the Tampa General Hospital PGY1 residency program. She is a member of American College of Clinical Pharmacists and the American Society of Health-Systems Pharmacists. Her teaching and research interests include expanding pharmacy services, transitions of care, heart failure and diabetes.



Nishi Karamsadkar, PharmD, BCACP, CPH

Clinical Pharmacist

Dr. Nishi Karamsadkar received her doctor of pharmacy degree from University of Minnesota in 2010. The following year, she completed an ASHP accredited specialty residency focused in primary care at Bay Pines Veterans Affairs Medical Center in St. Petersburg, FL. Dr. Karamsadkar began her clinical practice at Tampa General Hospital in 2011 as a clinical pharmacist. As pharmacy ambulatory services expanded, Dr. Karamsadkar transitioned to the TGH Family Care Center at Healthpark in 2014. Her clinical practice responsibilities include management of the anticoagulation clinic, managing patients with uncontrolled diabetes, medication review, transitions of care and patient teaching/education. In addition, she serves as the consultant pharmacist of record for various TGMG Clinics. Dr. Karamsadkar serves as an ambulatory care clerkship preceptor for local colleges of pharmacy and serves as one of the ambulatory care residency preceptors for the Tampa General Hospital PGY1 residency program. She is a member of the AC forum and ASHP. Her teaching and research interests include diabetes, hyperlipidemia, anticoagulation and expanding pharmacy services.



Infectious Diseases

Preceptor(s): Ripal Jariwala, PharmD, AAHIVP; Kristen Zeitler, PharmD, BCPS

Rotation Description:

As a required rotation for PGY1 residents, the Infectious Diseases rotation provides a good overview and introduction into ID Pharmacotherapy management. Residents will work on one of several consult teams with the USF Infectious Diseases group as the pharmacy expert. Depending on the ID service, residents will be exposed to patients with HIV, bacteremias, endocarditis, skin and soft tissue infections, meningitis, and many other infectious diseases. Residents will follow a subset of patients on the service and will be responsible for ID pharmacotherapy recommendations on those patients. This includes, but is not limited to, antibiotic selection and de-escalation, drug dosing and pharmacokinetics, drug-drug interaction review, microbiology reconciliation from outside facilities, allergy assessments, and drug information questions. Residents will engage in topic discussions with preceptors in order to address key ID-related topics throughout the rotation.

Ripal Jariwala, PharmD, AAHIVP

Pharmacotherapy Specialist, Infectious Diseases

Dr. Jariwala obtained her Bachelor of Science in Chemistry at the Georgia Institute of Technology in 2003. She was an ORISE fellow at the Centers for Disease Control and Prevention in Atlanta, GA and her research involved sexually transmitted infections. She received her Doctor of Pharmacy degree from the University of Tennessee in 2008. Her postgraduate training included a pharmacy practice residency at the VA Sierra Nevada Health Care System (Reno, NV) and a specialty residency in Infectious Diseases at the Bay Pines VA Health Care System (Bay Pines, FL). She joined TGH in 2010 to help implement the antimicrobial stewardship program (ASP). Her current practice includes supporting stewardship services throughout the hospital, collaborating with ID and non ID services, and providing education related to ID and ASP.



She is affiliated with the USF College of Medicine and USF College of Pharmacy as an adjunct professor. Currently, Dr. Jariwala precepts pharmacy residents in Infectious Diseases. Her practice and interests include multi-drug resistant organisms, HIV, stewardship related activities and anti-fungal pharmacotherapy. Dr. Jariwala is a current member of ACCP, SIDP, and is a co-chair of the TGH Antimicrobial Subcommittee.

Kristen Zeitler, PharmD, BCPS

Pharmacotherapy Specialist, Infectious Diseases

Dr. Zeitler received her Bachelor of Science degree in Chemistry from Fairfield University in CT in 2007 followed by her Doctor of Pharmacy degree from the University at Buffalo in 2011. For post-graduate residency training, she completed both a pharmacy practice residency and Infectious Diseases Specialty Residency at the Hospital of the University of Pennsylvania (Philadelphia, PA). She joined TGH in 2013 to further develop and grow the Antimicrobial Stewardship Program (ASP). Her current practice includes supporting stewardship services throughout the hospital, collaborating with ID and non-ID services, and providing education related to ID and ASP. Dr. Zeitler's practice interests include antimicrobial dosing and pharmacokinetics, antimicrobial stewardship and fungal infections. Dr. Zeitler is a current member of ASHP, ACCP and SIDP. She also serves as a co-chair of the TGH Antimicrobial Subcommittee.



General Pediatric/Pediatric Intensive Care Unit

Preceptor: Annie Gargasz, PharmD, BCPS; Saumil Patel, PharmD, BCPS

Rotation Description:

Residents on the general pediatric rotation will provide in-depth pharmacotherapeutic care to all patients on the Inpatient General Pediatric Medical Team. As a unit-based rounding service, residents will have the opportunity to work directly with the medical team. The team consists of an attending, medical residents, medical students, pharmacy students, and nursing staff. The resident will provide comprehensive care including admission medication reconciliation, daily in-depth profile review and optimization, patient education, and triage of drug information requests from the team. Daily interaction with the preceptor includes pharmacy pre-rounds, rounding with the medical team, and afternoon topic and patient case discussion. Progression of team ownership by the resident is expected as we work through the stages of model, coach, facilitate; with the ultimate goal of the resident being the sole pharmacist on team for their last week. Evaluation of pertinent literature and discussion of guideline-based care will also occur for the most common presenting disease states in pediatrics.

Annie Gargasz, PharmD, BCPS

Clinical Pharmacist, Pediatrics

Dr. Annie Gargasz received her doctor of pharmacy degree from the University of Florida College of Pharmacy in Gainesville, FL in 2004. Dr. Gargasz went on to complete an ASHP-accredited pharmacy practice residency at Southwest Washington Medical Center in Vancouver, WA. The following year, she completed an ASHP-accredited specialty residency in pediatrics at All Children's Hospital in St. Petersburg, FL. She worked for a year at Duke University Medical Center, covering all specialty areas of pediatric pharmacy. Dr. Gargasz began her clinical practice at Tampa General Hospital in 2007, focusing on general pediatrics. She is also an active member of the Pharmacy Pediatric Advocacy Group and the American College of Clinical Pharmacists.



Saumil Patel, PharmD, BCPS

Pharmacotherapy Specialist, Pediatrics

Dr. Patel received his doctor of pharmacy degree from the University of Kansas College of Pharmacy. He worked two years as a clinical pediatric pharmacist at St. Louis Children's Hospital in St. Louis, MO in the pediatric intensive care unit and served as the investigational pharmacist. In 2003, he completed an ASHP accredited pediatric specialty residency at St. Louis Children's Hospital, focusing on pediatric and neonatal critical care. Dr. Patel was involved in teaching drug information and non-prescription drugs class at the St. Louis College of Pharmacy. Currently, Dr. Patel is responsible for pharmacy services to the pediatric and neonatal intensive care units, general pediatrics, adult and pediatric dialysis, and labor and delivery. Dr. Patel's interests include pediatric and neonatal critical care, and hematology and oncology. Throughout his practice, he has had an interest in pediatric medication safety. His research interests include analgesia/sedation, pain management, and pharmacodynamic and kinetic properties of medications in pediatric populations. He is an active member of the American College of Clinical Pharmacy and the Pediatric Pharmacy Advocacy Group.



Critical Care

Rotation: Trauma / Surgery ICU

Preceptor: Christopher Allen, Pharm.D., BCPS, BCNSP

Rotation Description:

Residents on the trauma/surgery ICU rotation will provide in-depth pharmacotherapeutic care to patients within a trauma/surgical ICU setting. Residents will work as part of trauma/surgery critical care service. This rotation has components of both service-line based & unit based coverage. As such, residents will be responsible for collaborating with the multidisciplinary team as well as unit based coverage to provide comprehensive care including admission medication reconciliation, daily in-depth profile review and optimization, consult and monitoring services, and triage of drug information requests from the team. PGY1 residents who take this rotation will have a smaller patient load compared with the PGY2 emergency medicine and critical care residents on this rotation. Evaluation of pertinent literature and discussion of guideline-based care will also occur.

Christopher Allen, PharmD, BCPS, BCNSP

Clinical Pharmacist, Surgical and Trauma Critical Care

Dr. Allen earned his doctor of pharmacy degree from Florida Agricultural and Mechanical University College of Pharmacy in 2001 and later completed an ASHP accredited PGY 1 Pharmacy Practice Residency at Valley Medical Center in Renton, WA. After completion of residency training he joined the acute care clinical pharmacy staff at Tampa General Hospital in 2002 and transitioned into the Surgical Trauma Critical Care Pharmacist position in 2004. Dr. Allen participates in daily rounds with the Trauma/Acute Care Surgery service. In addition to his clinical responsibilities, Dr. Allen is an active member of Tampa General Hospital Nutrition Support Workgroup and Nutrition Executive Committee. Dr. Allen precepts PGY 2 and PGY 1 pharmacy residents, as well as students and interns. He also serves as a residency advisor and is an active member of the Residency Advisory Committee. Dr. Allen is an active member of Society of Critical Care Medicine and American Society of Parenteral and Enteral Nutrition



Rotation: Burn Intensive Care

Preceptor: Beatrice Adams, PharmD, BCPS, BCCCP

Rotation Description:

Residents on the burn ICU rotation will provide in-depth pharmacotherapeutic care to patients in the burn ICU with additional opportunity to provide care in outpatient burn clinic. The resident will work closely with the burn team as well as the critical care consult service to provide comprehensive care including, kinetic monitoring, nutrition support, order review/verification, medication reconciliation, wound care, patient education, and drug information to the team/staff. In addition to patient care activities, the resident will engage in topic discussions, provide an in-service to the staff, and literature/guideline review. Depending on patient load on the ICU service, residents may also follow patients in the step down burn unit.

Preceptor Profiles and Rotation Descriptions

Beatrice Adams, PharmD, BCPS, BCCCP

PGY1 Pharmacy Practice Residency Program Director
Critical Care Clinical Pharmacist



Dr. Adams received her doctor of pharmacy degree from LECOM School of Pharmacy in 2012 and went on to complete an ASHP-accredited PGY1 pharmacy practice residency and a PGY2 specialty residency in critical care at Tampa General Hospital. After completion of her residency she continued on with Tampa General Hospital, working as a critical care clinical pharmacist focused on providing care in the medical/surgical and burn intensive care units. In addition to her clinical responsibilities, she is active within the department and has recently transitioned to program director for our PGY1 pharmacy practice residency. Dr. Adams precepts the PGY1 residents, serves as a staffing advisor, and is an active member on the Residency Advisory Committee. She also holds appointments with the University of Florida and LECOM School of Pharmacy, precepting and mentoring pharmacy interns. Dr. Adams has been published in peer-reviewed journals and is an active member of the Society of Critical Care Medicine, American College of Clinical Pharmacy and Florida Society of Health-System Pharmacists.

Rotation: Medical ICU

Preceptor: Kevin Ferguson, PharmD, BCPS, BCCCP

Rotation Description:

The Medical ICU rotation is a 1 month learning experience that provides PGY1 and PGY2 residents the opportunity to care for complicated, critically ill patients. Residents will evaluate patient specific drug therapies with an emphasis on integration of pathophysiology, pharmacology, and therapeutics in order to devise appropriate pharmaceutical care plans. Residents will perform both unit based and service based activities on a daily basis. Resident activities include (but are not limited to) morning rounds with MICU team, managing pharmacotherapy consult service, order verification, communication with physicians and nurses, medication reconciliation, medication profile reviews, assisting the medical team with medication optimization, performing drug information research; education through topic discussions, journal clubs, and team inservices. Residents will have the opportunity to assist with precepting pharmacy students when they are on rotation. PGY2 residents will have a balance shift that focuses more on clinical activities compared to unit based residents. In addition, PGY2 residents will have a larger patient load and will assist with precepting PGY1 residents when they are on rotation.

Kevin Ferguson, PharmD, BCPS, BCCCP

Critical Care Clinical Pharmacist, Medicine



Dr. Ferguson received his doctor of pharmacy degree from the University of Florida College of Pharmacy in Gainesville, FL. He began his pharmacy career at Florida Hospital in Orlando and later joined the staff at Tampa General Hospital. For the past eleven years, he has been part of the healthcare team for the Medical ICU. His responsibilities include providing pharmaceutical care services for the patients in the MICU and also participating in daily rounds with the USF Pulmonary Critical Care team. Dr. Ferguson's involvement with the pharmacy residency program includes initial resident training and precepting both PGY1 and PGY2 residents for the Medical ICU rotation. Dr. Ferguson holds appointments as Clinical Assistant Professor at the University of Florida College of Pharmacy, LECOM School of Pharmacy, and Florida A&M College of Pharmacy. In 2012, Dr. Ferguson received the TGH President's Award. He is an active member of the Society of Critical Care Medicine (SCCM) and is involved with the research committee of the Society's Pharmacy section. Dr. Ferguson is also an active member of the American College of Clinical Pharmacy (ACCP).

Preceptor Profiles and Rotation Descriptions

Rotation: Cardiothoracic ICU (CTICU)

Preceptor: Mila Friedman, PharmD, BCPS

Rotation Description:

PGY2 residents on the CTICU rotation will provide in-depth pharmacotherapeutic care to a variety of patients who had undergone cardiothoracic surgical procedures (CABG, valve replacements/repairs, cardiac transplant, pulmonary transplant, VAD, ECMO, etc.). As this is a unit-based rotation, PGY2 residents will assume daily responsibilities of a unit-based pharmacist including order verification, in depth profile review and optimization, medication reconciliation, patient education, and will serve as a drug information resource to both nursing and medical teams. There are no formal teaching service rounds in CTICU; therefore, preceptor will arrange for additional learning opportunities (observing a surgical procedure, shadowing VAD coordinator, etc.). Evaluation of pertinent literature and discussion of guideline-based care will also occur.

[Lyudmila Friedman, PharmD, BCPS](#)

Critical Care Clinical Pharmacist, Cardiothoracic Surgery

Dr. Friedman received her doctor of pharmacy degree from the University of Florida College of Pharmacy in Gainesville, FL. She went on to complete an ASHP-accredited pharmacy practice residency at James A. Haley VAMC in Tampa, FL. She joined the clinical pharmacy staff at Tampa General Hospital in 2003. Dr. Friedman's responsibilities include providing pharmaceutical care services for the patients in the CTSICU and VICU. She is involved with the pharmacy residency program where she assists in initial resident training and offers PGY-2 elective critical care rotation in cardiothoracic surgery.



Rotation: Neurocritical care

Preceptor: Melissa Giarratano, PharmD, BCPS, BCCCP

Rotation Description:

This unit-based rotation is designed to provide the pharmacy resident with practical and clinical experience in the fields of Neurology and Neurosurgery, specifically Neurocritical Care. This rotation will provide residents opportunities in assessing and evaluating patient specific drug therapies with an emphasis on integration of pathophysiology, pharmacology and therapeutics to devise appropriate pharmaceutical care plans for patients in the Neuroscience ICU. Residents will serve as a drug-information resource for the Neuroscience teams, be actively involved in fulfilling pharmacy services, and will have opportunities to provide inservices to the health-care team. Unit-based responsibilities will be integrated into the rotation and include order verification, pharmacotherapy consults, patient scoring alerts and medication reconciliation. In addition, residents will be an integral part of the health-care team by participating in USF Vascular Neurology (stroke) rounds or alternative rounding service at the preceptor's discretion. The resident will actively follow any stroke patient that is in the Neuroscience ICU and other Neurocritical care patients at the preceptor's discretion. Lastly, evaluation of pertinent literature and discussion of guideline-based care will also occur throughout the learning experience.

Preceptor Profiles and Rotation Descriptions

Melissa Giarratano, PharmD, BCPS, BCCCP

Critical Care Clinical Pharmacist, Neurosciences

Dr. Melissa Giarratano received her doctor of pharmacy degree in 2003 from the University of Florida College of Pharmacy in Gainesville, FL. She then completed an ASHP-accredited pharmacy practice residency at Memorial Health University Medical Center in Savannah, GA. Dr. Giarratano has been a clinical staff pharmacist at Tampa General Hospital since 2004 and has been an active member of the neuroscience healthcare teams since 2005. Her practice area includes direct provision of pharmaceutical care services for patients in the neuroscience intensive care unit. Dr. Giarratano participates in daily rounds with the USF neurovascular and neurocritical care services. She is an involved preceptor with the student and residency training program. Dr. Giarratano received the Medication Safety Leadership Award at TGH in 2007. She is an active member of the Neurocritical Care Society and the Society of Critical Care Medicine. Her practice areas of interest include critical care, antimicrobial stewardship and continuity of care.



Rotation: Cardiology Critical Care/Cardiology Medicine

Preceptor: Czarina Bock, PharmD, BCPS, BCCCP

Rotation Description:

Cardiology rotation is designed to provide the pharmacy resident with practical and clinical experience in the field of cardiovascular medicine. Residents will be an integral part of the health-care team by participating in cardiology medicine rounds as well as following a variety of patients within the Cardiac Intensive Care Unit. This rotation is designed to provide residents opportunities in assessing and evaluating patient specific drug therapies with an emphasis on integration of pathophysiology, pharmacology and therapeutics to devise appropriate pharmaceutical care plans for cardiology patients. Residents will serve as the drug-information resource for the cardiology team, be actively involved in fulfilling pharmacy services (e.g. patient education), and will have opportunities to provide in-services to the health-care team. PGY2 residents will be responsible for overseeing students and PGY1 residents if applicable, will work more independently and will be responsible for managing more patients.

Czarina Bock, PharmD, BCPS, BCCCP

Critical Care Clinical Pharmacist, Cardiology

Dr. Bock received her doctor of pharmacy degree from Nova Southeastern University in 2009. She went on to complete an ASHP-accredited pharmacy practice residency at Bay Pines Veterans Affairs Health Care System in Bay Pines, FL. Upon completion of her residency she joined Tampa General Hospital in 2010 as a clinical staff pharmacist. Dr. Bock has experience covering a variety of patient population and areas including the IV room and supervisor role. She eventually transitioned to working as the clinical pharmacist providing care for the patients in the cardiac intensive care unit and cardiac cath lab. She is involved with residency training and offers a cardiology critical care rotation, as well as precept pharmacy students and interns. Dr. Bock received the Pharmacist of the Year Award in 2014. She currently serves on various committees such as Clinical Optimization, Anticoagulation Task Force and Afib Committee. Dr. Bock also participates and assists with order set and protocol development. She is a member of Anticoagulation Forum and American College of Clinical Pharmacy.





Preceptor Profiles and Rotation Descriptions

Hematology/Oncology

Preceptor(s): Leann Koontz, PharmD, BCPS; Linda Linderbeck, RPh, BCOP

Rotation Description:

Residents on the Hematology/Oncology rotation will work closely with the USF Hematology/Oncology medical team, Radiation Oncology, nursing staff and other practitioners to provide care to newly diagnosed oncology patients, ambulatory care based patients receiving treatment, and patients receiving inpatient chemotherapy with a focus in transitions of care. Additionally, residents will follow patients with a variety of benign hematologic disorders in addition to disease states such as neurology, rheumatology and gastro-intestinal disorders. As a specialty service rotation, residents will be responsible for collaborating with the multidisciplinary team to provide comprehensive care including medication reconciliation, daily in-depth profile review and optimization, and triage of drug information requests from the team. In addition, the resident will provide medication education to patients and staff, including at least one nursing presentation during the rotation. There will also be an opportunity to attend several tumor boards during the rotation as well as observe a gyn-onc surgery. Evaluation of cancer treatment guidelines and primary literature review will be as needed as residents design and recommend treatment and support plans for patients receiving chemotherapy. The resident will co-precept students while on rotation which will include guiding topic discussions to the students.

Leann M Koontz, PharmD, BCPS
Clinical Pharmacist, Cancer Center

Dr. Leann Koontz received her bachelor of pharmacy degree from The Ohio State University. She then completed an ASHP-accredited PGY1 residency at The Queen's Medical Center in Honolulu, Hawaii. Upon completion of her residency, Dr. Koontz worked as an ambulatory care clinical pharmacist for three years and authored two publications during that time. Dr. Koontz then relocated to Arizona where she worked as an oncology and critical care clinical pharmacist at two separate hospitals. She also completed her PharmD from Creighton University in 2001. In 2004, Dr. Koontz relocated to Tampa and joined Tampa General Hospital in 2005. She currently works at the cancer center where she actively manages cancer center and infusion patients. While at Tampa General Hospital, Dr. Koontz has also been involved in many programs that were piloted on her previous unit, including anticoagulation education streamlining, heart failure initiatives and meds to beds pharmacy delivery service, resulting in a poster presentation at Midyear 2013. In 2013, Dr. Koontz received a nomination for the TGH President's Award and was selected as preceptor of the year during pharmacy week. Dr. Koontz currently serves on the best practice committees and residency advisory committee. She is also an active member of the American Society of Health-System Pharmacists and Hematology Oncology Pharmacy Association. Her key areas of interest include hematology, oncology, immunology, and pain management. Currently, Dr. Koontz offers an ambulatory care and oncology rotation for pharmacy students and residents.



Linda R. Linderbeck, BS, RPh, BCOP
Clinical Pharmacist, Medicine, Hematology/Oncology

Linda R. Linderbeck received her bachelor of pharmacy degree from the University of Connecticut in 1990. She began her practice at the Yale-New Haven Hospital in New Haven, CT in the areas of nutrition support, hematology, oncology and bone marrow transplant. Her current practice at Tampa General Hospital includes provision of antimicrobial pharmacokinetics, parenteral nutrition and drug monitoring to medicine patients in addition to pain management, supportive and anti-neoplastic therapies to hematology and oncology patients. She currently serves on the hospital's pain management committee and precepts pharmacy interns, advanced practice students, and PGY-1 pharmacy practice



Preceptor Profiles and Rotation Descriptions

residents in the areas of medicine and hem-onc. She is an active member of the American Society of Clinical Oncology, American College of Clinical Pharmacy, and the Hematology Oncology Pharmacy Association.

Solid Organ Transplant

Rotation: Kidney and Pancreas Transplant

Preceptor: Lyndsey Bowman, PharmD, BCPS

Rotation Description:

Residents on the kidney and pancreas transplant rotation will provide in-depth pharmacotherapeutic care to a variety of newly transplanted and readmitted kidney and pancreas transplant recipients throughout the hospital. Residents will attend multidisciplinary rounds with the kidney transplant team and further provide comprehensive patient care through admission and discharge medication reconciliation and patient education. Residents will provide formal and informal drug information to the transplant team. In addition, residents will attend transplant listing meetings and participate in the evaluation of transplant candidates. Knowledge of immunosuppressants and antimicrobial therapy is emphasized, as well as internal medicine and care of the surgical patient.

Lyndsey J. Bowman, PharmD, BCPS

Pharmacotherapy Specialist, Kidney Transplant

Dr. Bowman received her Bachelor of Science and Doctor of Pharmacy degrees from St. Louis College of Pharmacy. She then went on to complete an ASHP-accredited PGY1 Pharmacy Practice Residency and PGY2 Critical Care Specialty Residency at the Medical University of South Carolina in Charleston, SC. Upon completion of residency training, she joined the team of transplant specialists as an abdominal organ transplant pharmacotherapy specialist at Barnes-Jewish Hospital (BJH) in St. Louis, MO. During her time at BJH, Dr. Bowman served as the Residency Program Director for the PGY2 Solid Organ Transplant Residency Program and the clinical supervisor of the transplant pharmacists. After 8 years at BJH, she joined the transplant clinical pharmacy group at Tampa General Hospital. In her current role, she has successfully established a new clinical pharmacy service and presence on the transplant nephrology team. As a clinical researcher, Dr. Bowman also contributes to medical literature through active publication in peer-reviewed journals and book chapters. Her research interests include viral infections, induction immunosuppression, alterations in maintenance immunosuppression regimens, and outcomes research in kidney and liver transplantation. Dr. Bowman's professional service activities include active membership in the American Society of Transplantation, the Transplant Pharmacy Community of Practice, and the American College of Clinical Pharmacists.



Rotation: Heart Transplant

Preceptor: Amy Rumore, PharmD, BCPS

Rotation Description:

Residents on the heart transplant rotation will provide in-depth pharmacotherapeutic care to a variety of newly transplanted and readmitted heart transplant recipients as well as heart transplant candidates, including MCS recipients throughout the hospital. As a service-line based rotation compared to unit based rotation, residents will be responsible for collaborating with the multidisciplinary team as well as covering unit based pharmacists to provide comprehensive care including admission and discharge medication reconciliation, daily in-depth profile review and optimization, patient education, and triage of drug information requests from the team. PGY1 residents will have a

Preceptor Profiles and Rotation Descriptions

smaller patient load compared with the PGY2 transplant residents who take this rotation, and PGY2 critical care residents will focus primarily on the intensive care unit-based patients. Evaluation of pertinent literature and discussion of guideline-based care will also occur.

Amy Rumore, PharmD, BCPS

Pharmacotherapy Specialist, Solid Organ Transplant

Dr. Amy Rumore received her doctor of pharmacy degree from University of Florida College of Pharmacy in 2010. She then went on to complete an ASHP-accredited pharmacy practice residency at Tampa General Hospital. Upon completion of residency, Dr. Rumore continued on at Tampa General Hospital to serve as a unit-based clinical pharmacist on the transplant unit and most recently accepted a new position as a solid organ transplant specialist. In this newest position, Dr. Rumore will focus on heart transplant and mechanical circulatory support patients. Dr. Rumore provides pharmacotherapy care in a variety of ways to transplant/MCS patients and serves on department committees as well. She precepts PGY1 pharmacy practice and PGY2 transplant residents, serves as a clinical assistant professor for UF College of Pharmacy students and precepts pharmacy interns. She is also a member of the International Society of Heart and Lung Transplant, the American Society of Transplant, and the American College of Clinical Pharmacists.



Rotation: Lung Transplant

Preceptor: Angela Tong Logan, PharmD, BCPS

Rotation Description:

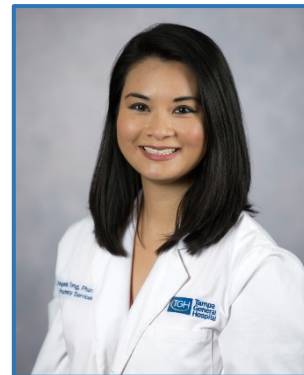
Residents on the lung transplant rotation will provide in-depth pharmacotherapeutic care to a variety of newly transplanted and readmitted lung transplant recipients as well as lung transplant candidates, including pulmonary medical management of end stage organ disease such as ILD (interstitial lung disease), pulmonary hypertension, and cystic fibrosis. As a service-line based rotation compared to unit based rotation, residents will be responsible for collaborating with a multidisciplinary team as well as covering unit based pharmacists to provide comprehensive care including admission and discharge medication reconciliation, daily in-depth profile review and optimization, patient education, and triage of drug information requests from the team. Residents will also provide transition of care services in assisting their teams with coordinating discharge prescriptions for their patients. Additionally, PGY2 transplant residents will have a longitudinal ambulatory clinic component on a recurring weekly basis starting the first month of their lung transplant rotation. This ambulatory care component can be offered to PGY1 residents with an interest in ambulatory care during their month on service. PGY1 residents will have a smaller patient load compared with the PGY2 transplant residents who take this rotation, and PGY2 critical care residents will focus on the intensive care unit-based patients as their primary patient care focus and medically managed patients on transplant floors as their secondary focus. Evaluation of pertinent literature and discussion of guideline-based care will also occur.

Preceptor Profiles and Rotation Descriptions

Angela T. Logan, PharmD, BCPS

Pharmacotherapy Specialist, Solid Organ Transplant

Dr. Logan received her doctor of pharmacy degree from University of Texas College of Pharmacy in 2009 and completed her first year ASHP-accredited general pharmacy practice residency at the Michael DeBakey VA Medical Center in Houston, TX. She completed her second year of solid organ transplant specialty residency training at Tampa General Hospital. Currently, she serves as the lung transplant specialist and PGY2 Solid Organ Transplant residency director. Dr. Angela Logan is involved in various aspects of the care of solid organ transplant recipients, including pre-transplant evaluations, clinical rounds, patient education and post-transplant ambulatory care clinics. Dr. Logan currently holds faculty appointments as Clinical Assistant Professor with the University of Florida College of Pharmacy and University of South Florida College of Pharmacy. She is a member of International Society of Heart and Lung Transplant, American Society of Transplant, American College of Clinical Pharmacy, and the Transplant/Immunology PRN group. She currently serves on various committees, assists in order set and protocol development, and precepts pharmacy students, PGY1 residents, and PGY2 residents. Her interests include research, transplant immunology, transplant infectious diseases, and an emphasis on cardiothoracic lung transplant.



Rotation: Liver Transplant

Preceptor: Andrew Silverman, PharmD, BCPS

Description:

The liver transplant service consists of new liver transplant patients, liver transplant patients readmitted to the hospital for a variety of reasons, and end stage liver disease patients or fulminant liver failure patients who are at Tampa General Hospital for the purpose of management of their disease until liver transplantation is available. The resident will become a key member of the liver transplant service. The resident will round with the liver transplant team (Transplant surgeon, transplant coordinator, transplant nurse practitioner, and surgical housestaff from the University of South Florida school of medicine). Initially the resident will follow a handful of patients, and round with the preceptor and the team. The goal is for the resident to take over the entire service (usually 8 to 12 patients) as they feel comfortable. The resident will perform patient admission medication histories and do discharge teaching on all of their patients, and participate in the medication teaching classes provided for patients, 3 times a week, on the transplant floor. The resident will provide drug information to the transplant healthcare professionals, and discuss direct patient care with the transplant pharmacotherapy specialist on a daily basis. Co-precepting of students will be part of the responsibilities of the resident as time allows. Topic discussions will occur with the preceptor 2 to 3 times a week. They will be determined by the preceptor, the resident, and the issues that arise with patients on the service. Research opportunities will be discussed prior to the start of the rotation.

Drew Silverman, PharmD, BCPS

Pharmacotherapy Specialist, Solid Organ Transplant

Dr. Silverman is a PharmD who has been working with kidney, liver and pancreas transplant patients for over 20 years. He received his BS and PharmD from the University of the Sciences of Philadelphia (Philadelphia College of Pharmacy). Dr. Silverman spent four years at the Hospital of the University of Pennsylvania, and then six years at the University of Pittsburgh Medical Center, working with transplant patients. He has spent the last 12 years at Tampa General Hospital working with the abdominal transplant programs. Dr. Silverman's main interests include patient education, empowering patients to take control of their disease, and continuity of care. His clinical interests include critical care, infectious disease, nutrition, immunology/





Preceptor Profiles and Rotation Descriptions

immunosuppression, end stage liver disease, and chronic renal insufficiency. He has given over 100 professional and patient presentations at local, state, and national meetings. He has written two book chapters and been an author of several publications.

Emergency Medicine

Preceptor(s):

Katelyn Dervay, PharmD, MPH, BCPS, FASHP; Mary Dansby, PharmD, BCPS ; Ana Avram, PharmD, BCPS; Lindsay Patel, PharmD, BCPS; Katie Smith, PharmD, BCPS; Dawn Tsang, PharmD, BCPS

Description:

The Emergency Medicine rotation experience involves the provision of direct patient care in the emergency department (ED) setting. It is designed to further develop the resident's knowledge and understanding of the pharmacotherapy of emergency medicine patients with a variety of disease states in a team-based environment. The resident will gain an understanding of emergency medical care from triage to discharge from the ED and the hospital and an appreciation of how the emergency department pharmacist can enhance the quality of pharmaceutical care delivered in the department and improve the continuity of care throughout the patient's hospital stay. Because there are not organized rounds in the emergency department, the resident will be expected to review all assigned patients and be prepared to make interventions. PGY1 residents will have a smaller patient load compared with the PGY2 emergency medicine residents who take this rotation, and PGY2 critical care residents will be exposed to all types of patients in the ED, but focus primarily on the intensive care unit-based patients. Evaluation of pertinent literature, discussion of guideline-based care, a journal club, in-service, drug information questions, and resident lead topic discussions will also occur.

Katelyn R. Dervay, PharmD, MPH, BCPS, FASHP

PGY2 Emergency Medicine Residency Director
Pharmacotherapy Specialist, Emergency Medicine

Dr. Katelyn Dervay graduated in 2005 with her doctor of pharmacy degree from the University of Florida. Her postgraduate training included a PGY1 pharmacy practice residency at UF Health Jacksonville Medical Center and a PGY2 specialty residency in emergency medicine at Detroit Receiving Hospital. Currently, her practice area includes direct pharmaceutical care of both ER and OR patients. She precepts both pharmacy students and residents and is actively involved with committees, education of healthcare providers and research. She is the PGY2 Emergency Medicine residency program director.



Dr. Dervay has acted on state, local and hospital bioterrorism preparedness teams and has conducted team drills for events such as pandemic flu and mass casualty events. Her interests include neurology/neurotrauma, toxicology, infectious diseases, emergency preparedness, and humanitarian relief. She has served as Chair of the ASHP Section of Clinical Specialists and Scientists (SCSS) Section Advisory Group on Emergency Care. As a member of the Florida Society of Health-System Pharmacists (FSHP), she has been involved with the Education Committee, the Membership Committee, and the Disaster Preparedness Committee. While on the Disaster Preparedness Committee, she held leadership roles as Chair and Vice-Chair. She is also an active member of the American College of Clinical Pharmacy (ACCP) and the International Pharmaceutical Federation (FIP). Dr. Dervay recently completed a M.P.H. with a focus on global disaster preparedness and humanitarian relief and was awarded the Outstanding Young Alumni Award by the University Of Florida College Of Pharmacy in 2014.

Preceptor Profiles and Rotation Descriptions

Mary Dansby, PharmD, BCPS

ED/OR Pharmacy Operations Supervisor

Clinical Pharmacist – Emergency Medicine/Surgical Services

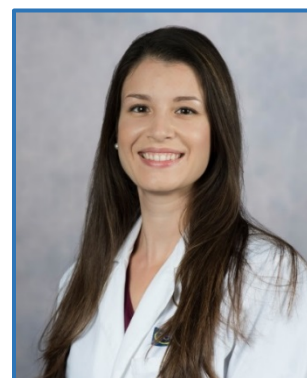
Dr. Mary Finocchi received her doctor of pharmacy degree from the University of Minnesota College of Pharmacy in Minneapolis, MN in 2005. She went on to complete an ASHP-accredited pharmacy practice residency at Tampa General Hospital. Dr. Finocchi piloted the first clinical pharmacist position in the emergency department and played a vital role in implementing pharmaceutical care emergency medicine services at Tampa General Hospital. She continues to practice as a clinical pharmacist in the emergency department and operating room, and supervises the ED/OR pharmacy satellite. Dr. Finocchi offers a clinical rotation in emergency medicine, precepts pharmacy students and residents, and serves as the Co-Director of the PGY2 Emergency Medicine Residency. She is involved in several committees, develops protocols and guidelines, education of other healthcare professionals, administration, and research. Dr. Finocchi has been published in peer-reviewed journals and is an active member of the American College of Clinical Pharmacy and the American Society of Health-Systems Pharmacists.



Ana Avram, PharmD, BCPS

Clinical Pharmacist, ED/OR

Dr. Avram graduated in 2008 with a doctor of pharmacy degree from Rutgers University in New Jersey. She then completed both a pharmacy practice residency and a specialty residency in anticoagulation/critical care at the Hospital of The University of Pennsylvania. She joined the clinical pharmacy staff at Tampa General Hospital in 2010. Her current practice area includes provision of pharmaceutical services for patients in the emergency department and operating rooms. Dr. Avram has worked closely with students and residents for emergency department and internal medicine rotations. Dr. Avram is actively involved with several hospital committees and is a member of the Society of Critical Care Medicine (SCCM).



Lindsay Patel, PharmD, BCPS

Clinical Pharmacist, ED/OR

Dr. Patel received her doctor of pharmacy degree from the University of Illinois College of Pharmacy in Chicago, IL in 2006. She then relocated to Tampa, FL to complete her pharmacy practice residency at Tampa General Hospital. Upon completion of the residency, Dr. Patel became part of the staff at Tampa General as a clinical staff pharmacist. She has served as the pharmacist for the Cardiac Intensive Care Unit eventually transferring to the Emergency Department. Dr. Patel is involved with precepting pharmacy residents, students, and interns. She is an active member of the American College of Clinical Pharmacy and the American Society of Health-System Pharmacists.

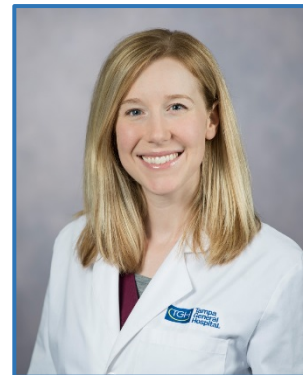


Preceptor Profiles and Rotation Descriptions

Katie Smith, PharmD, BCPS

Clinical Pharmacist, ED/OR

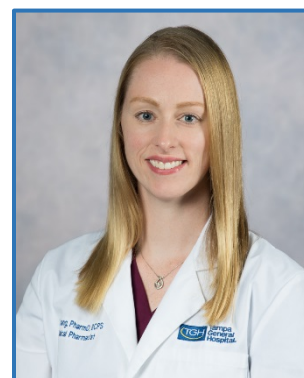
Dr. Katie O'Brien received her doctor of pharmacy degree from Nova Southeastern University in Ft. Lauderdale. She then completed her ASHP-accredited PGY1 program at Tampa General Hospital. Upon completion of her residency, Dr. O'Brien became a clinical pharmacist at Tampa General, primarily working in the emergency department and operating room settings. Dr. O'Brien serves as a preceptor for both the PGY2 emergency medicine resident and pharmacy students in the ED. She is involved with the medication shortage committee and is responsible for communicating shortages to ED/OR providers. She is also an active member of the American Society of Health-System Pharmacists.



Dawn Tsang, PharmD, BCPS

Clinical Pharmacist, ED/OR

Dr. Tsang received her doctorate of pharmacy degree from Hampton University in 2010. She began her hospital pharmacy career at Blake Medical Center in Bradenton, FL and helped expand pharmacy clinical services as they transitioned into a level 2 trauma center. In 2013 she joined Tampa General Hospital with a focus in covering Trauma and Burn Intensive Care Units and a Complex Medicine Unit. In 2014 Dr. Tsang accepted a position in the Emergency Medicine Department where she continues to practice as a clinical pharmacist. Dr. Tsang offers a clinical rotation in emergency medicine, precepting pharmacy students, PGY1, and PGY2 residents. She also serves on various committees, research projects, and serves as a resident mentor.



Alfred Aleguas Jr., BS Pharm, PharmD, D.ABAT

Managing Director, Florida Poison Information Center-Tampa

Dr. Aleguas obtained his BS Pharmacy degree from the University of Rhode Island in 1982. While in pharmacy school, he worked as an Emergency Room technician in a Level 1 Trauma center. He completed a Residency in Poison and Drug Information at Rhode Island Hospital in 1984. He earned his PharmD at the University of Rhode Island in 1997, attending as a full-time student from 1995-1997. He became a Diplomate of the American Board of Applied Toxicology in 2006. Dr. Aleguas became the Managing Director of the Florida Poison Information Center Tampa (FPIC-T) at Tampa General Hospital in January of 2013, a position he holds today. Dr. Aleguas holds faculty appointments as Clinical Assistant Professor at the University Of Florida College Of Pharmacy, and the University Of South Florida College Of Pharmacy.



Dr. Aleguas's current responsibilities include managing all clinical and administrative duties for operations of the FPIC-T. This includes budget and grant management, maintaining accreditation status, and all infrastructures necessary for a center serving 6.5 million residents of Central Florida. He is involved in all aspects of poison information and management, training of the CSPI's, development of treatment protocols and policies for the Center, and ongoing clinical research projects. He is also involved in collaborating with all public health partners including local, county, State and Federal agencies (CDC, ASTHO, NACCHO) on epidemiologic surveillance and WMD and Pandemic Influenza preparedness projects. His service for the poison center parent organization (the American Association of Poison Control Centers-AAPCC), include Chair of the Managing Directors and Midyear Planning Committee, and a member of the Data Collection Committee, CSPI Certification Task Force, Fatality Abstract Review Team, and CDC/AAPCC NPDS Toxicosurveillance Team. He is a member of the Board of Directors of the American Board of Applied Toxicology (ABAT), and is the Chair of the ABAT Examination Committee, and ABAT Nominations Committee.

Preceptor Profiles and Rotation Descriptions

Dr. Aleguas contributes to the toxicology literature with publication in peer-reviewed journals, online databases, and book chapters, as well as a professional journal reviewer for *Clinical Toxicology*, *Journal of Toxicology*, and *Up to Date*. He is a regular attendee and presenter at the North American Congress of Clinical Toxicology, and the Congress of the European Association of Poison Centers and Clinical Toxicologists (EAPCCT). As well as his ABAT involvement, he is also an active member of the American Academy of Clinical Toxicology, American College of Medical Toxicology, and the EAPCCT.

Longitudinal Experiences

Administration

Maja G. Gift, MHA, BS Pharm
Administrator, Pharmacy Services

Maja received a Bachelor of Pharmacy degree from University of Utah in 1983 and completed a PGY-1 residency at Children's National Medical Center in Washington, D.C. in 1984. In 2013, she received a Master in Healthcare Administration degree from Ohio University. Maja is the current Director of Pharmacy/Administrator of Pharmacy Services at Tampa General Hospital and has served in this role since 1997. She holds appointments as clinical assistant professor at the University of Florida College of Pharmacy Department of Pharmacy Practice, at University of South Florida College of Pharmacy, Florida A and M College of Pharmacy and is a clinical affiliate assistant professor at Nova Southeastern University College of Pharmacy.



Maja is a relentless advocate for the profession of pharmacy. As a result of her advocacy, pharmacy services at TGH have grown significantly. Key programs developed include, a fully integrated pharmacy practice model with unit-based clinical pharmacists in all inpatient areas, PGY-1 and PGY- residency program, specialty pharmacy program, ambulatory clinical pharmacists providing care transition services, and many others

Earnest Alexander Jr., PharmD, FCCM
PGY2 Critical Care Residency Co-Director
Assistant Director, Clinical Pharmacy Services

Dr. Alexander earned his PharmD from the Howard University College of Pharmacy in 1999, and later completed a PGY1 Pharmacy Practice Residency at the National Institutes of Health in 2000 and a PGY2 Critical Care/Nutrition Support Residency at the University of Tennessee at Memphis in 2001. After completing residency training, he assumed the role of Critical Care Pharmacotherapy Specialist at Tampa General in 2001 and later transitioned into a clinical manager role in 2006. Dr. Alexander holds faculty appointments as Clinical Assistant Professor with the Florida A&M University College of Pharmacy, the University of South Florida College of Pharmacy and the University of Florida College of Pharmacy. His current responsibilities involve coordinating pharmaceutical care and shaping the clinical service goals and direction of the pharmacy department. As an assistant director specializing in critical care, he is involved in direct patient care, pharmacy practice and specialty pharmacy residents, as well as the training of critical care clinical pharmacists. Dr. Alexander has also improved the care of critically ill patients and has positively impacted the hospital and pharmacy department's budget through the development of a number of drug therapy-related protocols/guidelines. As a clinical researcher, Dr. Alexander also contributes to medical literature through active publication in peer reviewed journals and book chapters, as well as having served as a professional journal reviewer for *Critical Care Medicine*, *Journal of Pharmacy Practice* and *Pharmacotherapy*. Additionally, he serves as co-editor for the AACN Advanced Critical Care journal's drug column. His areas of research focus include drug disposition in critically ill patients, including drug removal in continuous renal



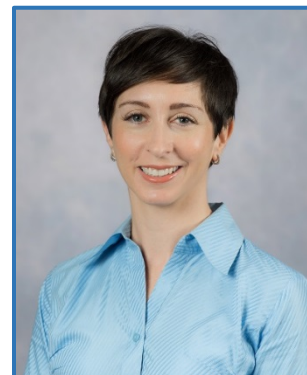
Preceptor Profiles and Rotation Descriptions

replacement therapy, nutritional support of critically ill patients, infectious diseases and sedation/analgesia in the ICU. He is an active member of the American Society of Health-System Pharmacists, the University HealthSystem Consortium and the Society of Critical Care Medicine. He is also a fellow of the American College of Critical Care Medicine.

Maresa D. Glass, PharmD, BCPS, BCCCP

PGY-2 Critical Care Residency Director
Pharmacotherapy Specialist, Critical Care

Dr. Glass received her Doctor of Pharmacy degree from the University of Florida, College of Pharmacy in 2002. She went on to complete an ASHP accredited pharmacy practice residency at Memorial Health University Medical Center in Savannah, Georgia. Upon completion of the residency program, Dr. Glass came to Tampa General Hospital as a critical care clinical pharmacist focusing on care of the adult Medical ICU and Burn ICU population. Her current practice as the Critical Care Pharmacotherapy Specialist involves coordinating the pharmaceutical care of Tampa General Hospital's adult critically ill patients. Dr. Glass serves as Director of the PGY-2 Critical Care Pharmacy Residency program. As a specialist, she is also involved in the training of PGY-1 and PGY-2 pharmacy residents as well as critical care clinical pharmacists. Dr. Glass has initiated a number of protocols, guidelines, and educational programs that focus on improving patient safety for the critically ill patient. She is an active member of the Society of Critical Care Medicine (SCCM), author, and investigator. Dr. Glass leads the hospital's multidisciplinary Medication Management Process Team; a group that focuses on optimizing medication use. Dr. Glass also serves as a liaison between the pharmacy department and the Epic EMR build teams, working to identify and build system changes to improve patient safety and end user workflow.



Teaching and/or Staffing

Andrew Brueckner, PharmD

Clinical Pharmacist, Solid Organ Transplant

Dr. Brueckner received his doctor of pharmacy degree from Massachusetts College of Pharmacy and Health Sciences. He then completed his PGY1 Pharmacy Practice Residency at Beth Israel Deaconess Medical Center in Boston, MA in 2016 and a PGY2 Solid Organ Transplant Residency at Tampa General Hospital in 2017. After completion of his residency, he continued at Tampa General Hospital working as a clinical pharmacist on the solid organ transplant unit. Dr. Brueckner's current role in the residency program is as a preceptor in training and teaching co-preceptor for the PGY2 Solid Organ Transplant Resident. Dr. Brueckner holds an Adjunct Professor of Pharmacy Practice appointment as USF College of Pharmacy where he provides transplant focused lectures in pharmacotherapeutics and pharmacology. He is also an active member for the American Society of Transplantation and the International Society of Heart and Lung Transplantation.

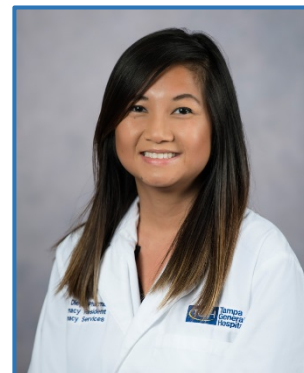


Preceptor Profiles and Rotation Descriptions

Uyen Diep, PharmD, BCCCP

Critical Care Clinical Pharmacist

Dr. Diep received her Doctor of Pharmacy degree from the University of Florida in 2014. She then went on to complete an ASHP-accredited PGY1 and PGY2 Critical Care pharmacy residency at Tampa General Hospital. She continued her career at Tampa General Hospital covering a multitude of critical care areas including trauma and neuroscience ICU. Dr. Diep precepts PGY1 and PGY2 critical care residents, serves as a teaching advisor, research advisor, and staffing preceptor. Dr. Diep is an active member of the Society of Critical Care Medicine (SCCM), American College of Clinical Pharmacy (ACCP), and Florida Society of Health-System Pharmacists (FSHP). She currently serves on various committees such as Nutrition and Clinical Optimization.



Joseph C. Haley, PharmD, BCPS

Clinical Pharmacist

Dr. Haley received his Bachelor of Science in Chemistry at the University of Florida in 2009 and Doctor of Pharmacy at the University of Florida College of Pharmacy in 2015. His postgraduate training included completion of an ASHP-accredited pharmacy practice residency (PGY1) at Tampa General Hospital. Upon finishing the residency program, he transitioned into the role of a clinical staff pharmacist at Tampa General Hospital focused in transitional care and critical care units. He serves on the Clinical Optimization Task Force and as a pharmacy resident staffing advisor. Dr. Haley holds appointments as Clinical Assistant Professor at the University of Florida College of Pharmacy and the University of South Florida College of Pharmacy, precepting and mentoring student pharmacists. Dr. Haley remains actively engaged in legislative advocacy through the Florida Pharmacy Association (FPA) as well as the American Pharmacist Association (APhA).



Sonya Hylton, PharmD

Clinical Pharmacist

Dr. Hylton began her pharmacy career at the University of Florida where she received her Doctor of Pharmacy degree in 2014. She then went on to complete an ASHP-accredited PGY-1 residency at Tampa General Hospital and upon completion, joined the clinical inpatient pharmacy team in 2015. Dr. Hylton primarily provides pharmacotherapy services to post-surgical patients on the oncology and surgical trauma units. In addition to those clinical responsibilities, she also provides services to patients requiring chemotherapy throughout the hospital and in its infusion center. Dr. Hylton is involved as a staffing preceptor in the residency program as well as a preceptor to both pharmacy interns and students.



Preceptor Profiles and Rotation Descriptions

Benjamin Jacob, PharmD

Clinical Pharmacist

Dr. Jacob received his Doctor of Pharmacy degree from the University of Florida in 2014. He has deep roots at Tampa General, starting his career as a pharmacy technician until obtaining his doctorate degree. He started his career as a clinical pharmacist at Kindred Hospital in St. Petersburg, FL. He returned to the Tampa General Hospital pharmacy team in 2015. His clinical practice primarily focuses on the critical care population, encompassing patients in the Burn, Surgical Trauma, and Neuroscience ICUs. He is also trained in sterile compounding and coverage in the pharmacy's IV room. Dr. Jacob is involved with precepting PGY1 residents and pharmacy students enrolled in the internship program.



Nicholas Piccicacco, PharmD, BCPS

Clinical Pharmacist

Dr. Piccicacco received his Doctor of Pharmacy degree from the University of Florida in 2014. He then went on to complete an ASHP-accredited PGY1 pharmacy residency at Tampa General Hospital and PGY2 Infectious Diseases pharmacy residency at Morton Plant Hospital – BayCare Health System, Clearwater, FL. Dr. Piccicacco precepts the PGY1 residents, is a teaching advisor, and a member on the Residency Advisory Committee. He holds faculty appointments with the University of Florida and University of South Florida Colleges of Pharmacy. Dr. Piccicacco is an active member of the Society of Infectious Diseases Pharmacists (SIDP), where he serves on the antimicrobial stewardship certificate subcommittee, Making a Difference in Infectious Diseases (MAD-ID), American College of Clinical Pharmacy (ACCP), and Florida Society of Health-System Pharmacists (FSHP).



April Zepf, PharmD, BCPS

Clinical Pharmacist, Pediatrics

Dr. April Zepf received her doctor of pharmacy degree from LECOM School of Pharmacy in 2013. She began her pharmacy career at Florida Hospital Connerton LTAC which serves the adult critical care population where she continues to work on an as needed basis. In 2014, she joined the Tampa General Hospital team as a clinical pharmacist covering adult medicine and critical care areas. Shortly after, Dr. Zepf trained and started practicing in pediatrics. She now serves as one of the NICU pharmacists. Dr. Zepf is a staffing preceptor for the residency program and a preceptor for pharmacy students and interns. She currently serves on various pharmacy committees including Clinical Optimization, Anticoagulation Task Force, Preceptor Development Subcommittee and Social Planning Committee. She is involved in various NICU committees, best practice meetings and ongoing research.

