

INPATIENT PEDIATRIC REHABILITATION PROGRAM

FY 2024 OUTCOMES



32

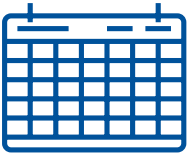
Patients



Ages

1-17 years

Average age: 10.3



Length of stay (lower is better)

TGH: 19.4 days

National average: 26 days



WeeFIM change (higher is better)

22.7

National average: 21.8



Length-of-stay efficiency
(higher is better)

Indicates how effective a rehab program is/how quickly a program can improve a child's functional ability

1.45; national average: 1.33



Satisfaction and patient experience

100% of our patients rate the care their therapists provide in the top two categories of "excellent" or "very good"

94% of our patients were discharged to home; national average: 86.4%

Conditions we treat, but are not limited to:

- Amputation
- Burns
- Debility/deconditioning
- Multiple trauma
- Neurological disorders
 - Cerebral palsy with surgery (SDR), Guillain-Barré, spina bifida, neuropathies
- Non-traumatic brain injury
 - Brain tumors, hemispherectomy, encephalitis, encephalopathy
- Non-traumatic spinal cord
 - Tumors, transverse myelitis
- Orthopaedic and musculoskeletal disorders
- Pulmonary
- Stroke
 - Hemorrhagic or ischemic stroke
 - Arteriovenous malformation (AVM)
- Traumatic brain injury
- Traumatic spinal cord injury
- And other conditions that result in functional impairment or disability

INPATIENT PEDIATRIC REHABILITATION PROGRAM

KEY FEATURES



30+

Subspecialties



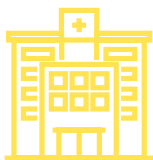
Multidisciplinary
team-based approach
to maximize recovery



Two facility dogs



Up to eight rehab beds



Located within a
Level 1 trauma hospital



Newly renovated
rooms and gym



A minimum of 15 hours of
rehab therapy is provided
each week



Patients receive
24/7 pediatric
physician and nursing care

FY 2024 PATIENT POPULATION



- Brain injury
- Cerebral palsy
- Major multiple trauma
- Neurological disorders
- Other
- Pulmonary
- Spinal cord injury
- Stroke