

### Internal Medicine

**Preceptor(s):**

Sonya Hylton, PharmD; Deanna Warfield, PharmD, BCPS; Steven Guzman, PharmD, BCCCP; Jennifer Marsh, PharmD, BCCCP; Tamara Richards, PharmD; Thomas Liu, PharmD, BCPS, BCIDP

**Rotation Description:**

Residents on the required internal medicine rotation will provide pharmacotherapeutic care for the patients admitted on primary care, complex medicine, or similar units. The internal medicine service consists of the house staff internal medicine and specialty services (USF Teams) as well as private provider groups. Residents will attend daily patient care rounds with their assigned Internal Medicine teaching service, which is comprised of attendings and medicine residents and students. Pharmacy residents will be involved with drug therapy management of all patients followed from admission to discharge. Core components of the rotation include but are not limited to the identification of potential drug therapy problems, comprehensive review or initiation of drug regimens, therapeutic drug monitoring, informal drug information service, and patient counseling. At the beginning of the rotation, the preceptor will review the pharmacy resident's baseline clinical knowledge. Learning experiences will be focused on areas of opportunity and common disease states as able. The pharmacy resident will be responsible for evaluation of evidence-based guidelines and pertinent literature during the rotation. The resident will gain extensive experience in internal medicine through structured learning experiences and independent practice.

**Sonya Hylton, PharmD**

Clinical Pharmacist

Dr. Sonya Hylton attained her Doctor of Pharmacy degree through the University of Florida in Gainesville, FL. She then went on to complete an ASHP-accredited PGY-1 residency at Tampa General Hospital (TGH). Upon completion in 2015, she joined as clinical pharmacist at TGH in the oncology department. At present, she rounds with the USF Internal Medicine Teams providing patient care in a variety of areas such as urology, cardiology, oncology and complex medicine. In addition, she serves as an internal medicine and staffing preceptor for the PGY1 residency program and works with pharmacy interns and students. Her personal interests include interior design, antiques, gardening and baking.

**Deanna Warfield, PharmD, BCPS**

Clinical Pharmacist

Dr. Deanna Warfield received her Doctor of Pharmacy degree from Harding University College of Pharmacy in Searcy, Arkansas. She began her pharmacy career at Baptist Hospital of North Little Rock in Arkansas and later joined the staff at Tampa General Hospital as a clinical pharmacist covering adult medicine and critical care areas. Her current roles are serving as a clinical pharmacist and as Medical/Surgical pharmacy supervisor. Her responsibilities include providing pharmaceutical care services for a variety of areas including vascular surgery, complex medicine, oncology, and transplant. She participates in daily rounds with the USF Internal Medicine Team. She serves on the Clinical Optimization Task Force and Pharmacy Residency Advisory Committee.



## Preceptor Profiles and Rotation Descriptions

---

### [Steven Guzman, PharmD, BCPS, BCCCP](#) Clinical Pharmacist

Dr. Steven Guzman received his Doctor of Pharmacy degree from the University of South Florida College of Pharmacy in 2016 and completed an ASHP-accredited pharmacy practice residency at Tampa General Hospital. Upon finishing the residency program, he transitioned into a role as an Emergency Medicine Clinical Pharmacist for several years before rejoining Tampa General as a Clinical Pharmacist. He now works with pharmacy interns, APPE students, and pharmacy residents in addition to his clinical duties. He currently is responsible for providing care to Medical/Surgical patients and has worked in a variety of Critical Care specialty areas. He remains interested in critical care and emergency medicine topics, is active as an adjunct faculty with USF COP, and is a chair on the Residency Advisory Committee.



### [Jennifer Marsh, PharmD, BCCCP](#)

Assistant Professor, University of South Florida Taneja College of Pharmacy

Jennifer Marsh is an Assistant Professor in the Department of Pharmacotherapeutics & Clinical Research at the University of South Florida Taneja College of Pharmacy. She completed her PGY1 and then PGY2 in Critical Care at Tampa General Hospital, where she worked as an ICU Clinical Pharmacist until transitioning to her current academic role. She rounds with one of the USF Internal Medicine Teaching teams and takes APPE students and PGY1s on Internal Medicine rotations. She also is part of the Teaching Subgroup lead rotation under the Residency Advisory Committee and is a coordinator for the Teaching Certificate Program that all PGY1 residents complete. Her professional and research interests include medication safety and interprofessional health education. Her personal interests include taking group fitness classes at the YMCA and sharpening her culinary skills as personal chef for her toddler.



### [Tamara Richards, PharmD, BCPS](#) Clinical Pharmacist

Dr. Richards received her Doctor of Pharmacy degree from Florida A&M University. She went on to complete an ASHP-accredited pharmacy practice residency with Florida A & M University at the Miami Veteran Affairs Medical Center in Miami, FL. She began her career as a clinical pharmacist specialist at Regional Medical Center of Bayonet Point in Hudson, FL and later transitioned into academia as an assistant professor with FAMU where she created a General Medicine practice site here at Tampa General Hospital. She officially joined the clinical pharmacy staff at Tampa General Hospital in 2023. Dr. Richards has worked in a variety of patient care areas and now precepts APPE students and residents in addition to her clinical responsibilities.



### [Thomas Liu, PharmD, BCPS, BCIDP](#) Clinical Pharmacist

## Preceptor Profiles and Rotation Descriptions

Dr. Liu received his Doctor of Pharmacy degree from the University of Florida in 2022. He went on to complete an ASHP-accredited PGY1 Pharmacy Practice Residency at the Bay Pines VA Healthcare System and PGY-2 Infectious Diseases Pharmacy Residency at the Baptist Health South Florida Clinical Enterprise. Upon completion of his residency, he joined the team at Tampa General Hospital as a Clinical Pharmacist in 2024 and provides pharmaceutical care for Solid Organ Transplant patients. He serves as a preceptor for PGY1 and PGY2 Solid Organ Transplant pharmacy residents. He also holds appointments with the University of Florida College of Pharmacy and LECOM School of Pharmacy as an Advanced Pharmacy Practice Experiences pharmacy student preceptor. His professional service activities include active membership in the Society of Infectious Diseases Pharmacists, particularly on the social media committee. His practice interests include transplant infectious diseases, PK/PD optimization, antimicrobial and diagnostic stewardship.



### Ambulatory Care

#### Preceptor(s):

Jessica Bianco, PharmD, BCACP, CACP, CPh; Nishi Karamsadkar, PharmD, BCACP, CPh; Marcus Campbell, PharmD, CPh, BC-ADM; Samantha Stylos, PharmD, BCACP, CPh

**Rotation Description:** Residents on their ambulatory care rotation will provide chronic disease state management for patients with diabetes, hyperlipidemia, hypertension, and/or COPD and those on anticoagulant therapy based on the current collaborative practice agreement. In addition, the resident will have the opportunity to participate in the transitions of care and chronic care management services. The resident will provide medication and device education to patients, in-services for the providers and staff and answer drug information questions as needed. The resident will also have the opportunity to enhance their precepting/teaching skills by serving as a preceptor to APPE students, moderating student topic discussions and leading journal club. The resident will participate in the virtual “Diabetes Self-management” class with the PGY2 ambulatory care resident that occurs each month. Evaluation of pertinent literature and discussion of guideline-based care will also be an integral part of the ambulatory care rotation.

#### Jessica Bianco, PharmD, BCACP, CACP, CPh

PGY2 Ambulatory Care Residency Director  
Pharmacotherapy Specialist Coordinator, Ambulatory Care

Jessica Bianco received her Doctor of Pharmacy degree from Nova Southeastern University in Ft. Lauderdale, FL in 2001. She completed an ASHP-accredited specialty residency in ambulatory care at Bay Pines VAMC in St. Petersburg, FL the following year. Dr. Bianco began her practice at Tampa General Hospital in 2002 as an inpatient clinical pharmacist, but quickly developed ambulatory pharmacotherapy services the following year, focusing on chronic disease state management. Dr. Bianco serves as an ambulatory care APPE preceptor for several pharmacy schools, serves as a preceptor for the PGY1 residency program and as the Director for the PGY2 Ambulatory Care Residency Program. She is a member of the American Society of Health-Systems Pharmacists, Florida Society of Health-Systems Pharmacists and serves as Chair for the Ambulatory Care Practitioners Section Advisory Group on Medication Management Services. She has received several awards during her career including, Pharmacist of the Year, Preceptor of the Year, and Medication Safety Agent of the Year. Her teaching and research interests include implementing and expanding pharmacy services, specifically telemedicine services and remote patient monitoring services.



## Preceptor Profiles and Rotation Descriptions

**Nishi Karamsadkar, PharmD, BCACP, CPH**  
PGY2 Ambulatory Care Residency Co-Director  
Pharmacotherapy Specialist, Ambulatory Care



Dr. Nishi Karamsadkar received her Doctor of Pharmacy degree from University of Minnesota in 2010. The following year, she completed an ASHP accredited specialty residency focused in primary care at Bay Pines Veterans Affairs Medical Center in St. Petersburg, FL. Dr. Karamsadkar began her clinical practice at Tampa General Hospital in 2011 as an inpatient clinical pharmacist. As pharmacy ambulatory services expanded, Dr. Karamsadkar transitioned to the TGH Family Care Center at Healthpark in 2014. Through a collaborative practice agreement, her current clinical practice responsibilities include disease state management via telehealth or face to face visits. As a Specialist, Dr. Karamsadkar oversees population health management, QI, faculty training and consultant pharmacist oversight.

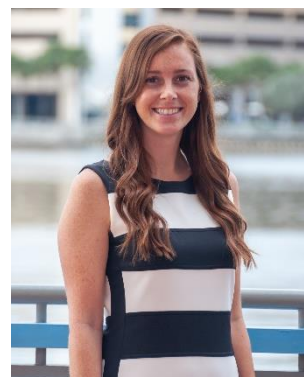
In addition, Dr. Karamsadkar serves as an ambulatory care clerkship preceptor for local colleges of pharmacy, along with ambulatory care preceptor for the Tampa General Hospital PGY1 residency program and Teaching and PC2 and preceptor for the PGY2 residency program. She is a member of FSHP, ASHP and AC forum. Her teaching and research interests include diabetes, hyperlipidemia, population health and expanding pharmacy services.

**Marcus Campbell, PharmD, CPh, BC-ADM**  
Ambulatory Care Clinical Pharmacist



Marcus Campbell earned a Doctor of Pharmacy from the University of Florida (UF) College of Pharmacy in 2009. He completed an ambulatory care specialty residency program and post-doctoral teaching certification program at UF, as well as a Clinical Pharmacology Fellowship with Clinical Pharmacology Services and the American Institute of Pharmaceutical Sciences in Tampa, FL. He is Board Certified in Advanced Diabetes Management since 2012 and passionately disseminates diabetes education to patients, healthcare professionals, and students. Dr. Campbell is currently an ambulatory care clinical pharmacist at Tampa General Hospital (TGH). He provides ambulatory care pharmacy services at Tampa General Medical Group (TGMG) Family Care Center in Sun City, FL. This has been his practice since shortly after the clinic opened in 2013, initially as faculty of LECOM School of Pharmacy, and since 2019 as a full-time member of the TGH team. Dr. Campbell and the rest of TGH ambulatory care pharmacy team offer an array of chronic disease management and transitional care services across the greater Tampa Bay area.

**Samantha Stylos, PharmD, BCACP, CPh**  
Ambulatory Care Clinical Pharmacist



Dr. Samantha Stylos received her Doctor of Pharmacy degree from the University of South Florida in 2020. Afterwards, she completed an ASHP-accredited pharmacy residency focused in ambulatory care at AdventHealth Celebration. Following this, she completed an ASHP-accredited pharmacy residency in ambulatory care at Tampa General Hospital. Upon completion of this, she joined the team at Tampa General Hospital as an ambulatory care pharmacist. Through a collaborative practice agreement, her clinical practice responsibilities include management of uncontrolled diabetes, hypertension, and hyperlipidemia, medication reviews, transitions of care, and patient education. Her teaching and research interests include expanding pharmacy services, population health, hypertension, diabetes, and anticoagulation.



### Infectious Diseases

**Preceptor(s):** Kristen Greene, PharmD, BCPS, BCIDP; Nicholas Piccicacco, PharmD, BCIDP, AAHIVP; Melissa O’Neal, PharmD

#### Rotation Description:

As a required rotation for PGY1 residents, the Infectious Diseases rotation provides a good overview and introduction into ID Pharmacotherapy management. Residents will work on one of several consult teams with the USF Infectious Diseases group as the pharmacy expert. Depending on the ID service, residents will be exposed to patients with HIV, bacteremia, endocarditis, skin and soft tissue infections, meningitis, and many other infectious diseases. Residents will follow a subset of patients on the service and will be responsible for ID pharmacotherapy recommendations on those patients. This includes, but is not limited to, antibiotic selection and de-escalation, drug dosing and pharmacokinetics, drug-drug interaction review, microbiology reconciliation from outside facilities, allergy assessments, and drug information questions. Residents will engage in topic discussions with preceptors in order to address key ID-related topics throughout the rotation.

#### Kristen Greene, PharmD, BCPS, BCIDP

Pharmacotherapy Specialist, Infectious Diseases

Dr. Zeitler received her Bachelor of Science degree in Chemistry from Fairfield University in CT in 2007 followed by her Doctor of Pharmacy degree from the University at Buffalo in 2011. For post-graduate residency training, she completed both a pharmacy practice residency and Infectious Diseases Specialty Residency at the Hospital of the University of Pennsylvania (Philadelphia, PA). She joined TGH in 2013 to further develop and grow the Antimicrobial Stewardship Program (ASP). Her current practice includes supporting stewardship services throughout the hospital, collaborating with ID and non-ID services, and providing education related to ID and ASP. Dr. Zeitler’s practice interests include antimicrobial dosing and pharmacokinetics, antimicrobial stewardship and fungal infections. Dr. Zeitler is a current member of ACCP and SIDP. She also serves as a co-chair of the TGH Antimicrobial Subcommittee and a research preceptor for the residency program.



#### Nicholas Piccicacco, PharmD, BCIDP, AAHIVP

Pharmacotherapy Specialist, Infectious Diseases

Dr. Piccicacco received his Doctor of Pharmacy degree from the University of Florida in 2014. He then went on to complete an ASHP-accredited PGY1 pharmacy residency at Tampa General Hospital and PGY2 Infectious Diseases pharmacy residency at Morton Plant Hospital – BayCare Health System, Clearwater, FL. Dr. Piccicacco precepts the PGY1 and PGY2 residents and is a member on the Residency Advisory Committee. He also serves as a co-chair of the TGH Antimicrobial Subcommittee and a research and teaching preceptor for the residency program. Dr. Piccicacco holds faculty appointments with the University of Florida and University of South Florida Colleges of Pharmacy and Medicine. He is an active member of the Society of Infectious Diseases Pharmacists (SIDP) and Making a Difference in Infectious Diseases (MAD-ID). Dr. Piccicacco’s practice interests include vancomycin pharmacokinetics, HIV/AIDS, NTM infections, and diagnostic stewardship.



## Preceptor Profiles and Rotation Descriptions

---

### Melissa O'Neal, PharmD

Pharmacotherapy Specialist, Infectious Diseases

Dr. O'Neal received her Bachelor of Science in Pharmaceutical Sciences and Doctor of Pharmacy degrees from the University of South Carolina in 2020. She completed post-graduate training with PGY1 Pharmacy Practice and PGY2 Infectious Diseases residencies at Houston Methodist Hospital in Houston, Texas. She is an active member of the Antimicrobial Stewardship Program (ASP) at TGH as well as a member of ACCP and SIDP, nationally. In her current practice, Dr. O'Neal particularly enjoys precepting pharmacy residents, reconciling beta lactam allergies and discussing gram-negative resistance mechanisms.



### General Pediatrics

**Preceptor(s):** Annie Gargas, PharmD, BCPS; Saumil Patel, PharmD, BCPS

#### Rotation Description:

Residents on the general pediatric rotation will provide in-depth pharmacotherapeutic care to all patients on the Inpatient General Pediatric Medical Team. As a unit-based rounding service, residents will have the opportunity to work directly with the medical team. The team consists of an attending, medical residents, medical students, pharmacy students, and nursing staff. The resident will provide comprehensive care including admission medication reconciliation, daily in-depth profile review and optimization, patient education, and triage of drug information requests from the team. Daily interaction with the preceptor includes pharmacy pre-rounds, rounding with the medical team, and afternoon topic and patient case discussion. Progression of team ownership by the resident is expected as we work through the stages of model, coach, facilitate; with the ultimate goal of the resident being the sole pharmacist on team for their last week. Evaluation of pertinent literature and discussion of guideline-based care will also occur for the most common presenting disease states in pediatrics.

### Annie Gargas, PharmD, BCPS, BCPPS

Clinical Pharmacist, Pediatrics

Dr. Annie Gargas received her Doctor of Pharmacy degree from the University of Florida College of Pharmacy in Gainesville, FL in 2004. Dr. Gargas went on to complete an ASHP-accredited pharmacy practice residency at Southwest Washington Medical Center in Vancouver, WA. The following year, she completed an ASHP-accredited specialty residency in pediatrics at All Children's Hospital in St. Petersburg, FL. She worked for a year at Duke University Medical Center, covering all specialty areas of pediatric pharmacy. Dr. Gargas began her clinical practice at Tampa General Hospital in 2007, focusing on general pediatrics. She is also an active member of the Pediatric Pharmacy Advocacy Group and the American College of Clinical Pharmacists.



## Preceptor Profiles and Rotation Descriptions

### Saumil Patel, PharmD, BCPS

Pediatric Pharmacotherapy Specialist Coordinator

Dr. Patel received his Doctor of Pharmacy degree from the University of Kansas College of Pharmacy. He worked two years as a clinical pediatric pharmacist at St. Louis Children's Hospital in St. Louis, MO in the pediatric intensive care unit and served as the investigational pharmacist. In 2003, he completed an ASHP accredited pediatric specialty residency at St. Louis Children's Hospital, focusing on pediatric and neonatal critical care. Dr. Patel was involved in teaching drug information and non-prescription drugs class at the St. Louis College of Pharmacy. Currently, Dr. Patel is responsible for pharmacy services to the pediatric and neonatal intensive care units, general pediatrics, adult and pediatric dialysis, and labor and delivery. Dr. Patel's interests include pediatric and neonatal critical care, and hematology and oncology. Throughout his practice, he has had an interest in pediatric medication safety. His research interests include analgesia/sedation, pain management, and pharmacodynamic and kinetic properties of medications in pediatric populations. He is an active member of the American College of Clinical Pharmacy and the Pediatric Pharmacy Advocacy Group.



## Critical Care

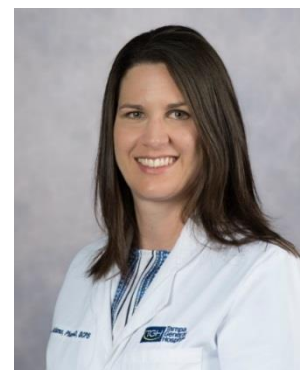
### Beatrice Adams, PharmD, BCPS, BCCCP, FCCM

PGY2 Critical Care Residency Program Director

Coordinator of Residency Programs

Manager, Pharmacy Patient Care Services

Dr. Adams received her Doctor of Pharmacy degree from LECOM School of Pharmacy in 2012 and went on to complete an ASHP-accredited PGY1 pharmacy practice residency and a PGY2 specialty residency in critical care at Tampa General Hospital. After completion of her residency she continued on with Tampa General Hospital, working as a critical care clinical pharmacist focused on providing care in the medical/surgical and burn intensive care units. In addition to her clinical responsibilities, Dr. Adams serves as both the program director for the PGY1 pharmacy practice residency and the Coordinator of Residency Programs. Dr. Adams precepts the PGY1 and PGY2 residents, serves as a staffing advisor, and is an active member on the Residency Advisory Committee. She also holds appointments with the University of Florida and LECOM School of Pharmacy, precepting and mentoring pharmacy interns. Dr. Adams has been published in peer-reviewed journals and is an active member of the Society of Critical Care Medicine, American College of Clinical Pharmacy and Florida Society of Health-System Pharmacists.



**Rotation:** Trauma / Surgery ICU

**Preceptor:** Christopher Allen, PharmD, BCNSP

### Rotation Description:

Residents on the trauma/surgery ICU rotation will provide in-depth pharmacotherapeutic care to patients within a trauma/surgical ICU setting. Residents will work as part of trauma/surgery critical care service. This rotation has components of both service-line based & unit based coverage. As such, residents will be responsible for collaborating with the multidisciplinary team as well as unit based coverage to provide comprehensive care including admission medication reconciliation, daily in-depth profile review and optimization, consult and monitoring services, and triage of drug information requests from the team. PGY1 residents who take this rotation

## Preceptor Profiles and Rotation Descriptions

---

will have a smaller patient load compared with the PGY2 emergency medicine and critical care residents on this rotation. Evaluation of pertinent literature and discussion of guideline-based care will also occur.

### [Christopher Allen, PharmD, BCNSP](#)

Clinical Pharmacist, Surgical and Trauma Critical Care

Dr. Allen earned his Doctor of Pharmacy degree from Florida Agricultural and Mechanical University College of Pharmacy in 2001 and later completed an ASHP accredited PGY1 Pharmacy Practice Residency at Valley Medical Center in Renton, WA. After completion of residency training he joined the acute care clinical pharmacy staff at Tampa General Hospital in 2002 and transitioned into the Surgical Trauma Critical Care Pharmacist position in 2004. Dr. Allen participates in daily rounds with the Trauma/Acute Care Surgery service. In addition to his clinical responsibilities, Dr. Allen is an active member of Tampa General Hospital Nutrition Support Workgroup and Nutrition Executive Committee. Dr. Allen precepts PGY 2 and PGY 1 pharmacy residents, as well as students and interns. He also serves as a residency advisor and is an active member of the Residency Advisory Committee. Dr. Allen is an active member of Society of Critical Care Medicine and American Society of Parenteral and Enteral Nutrition



**Rotation:** Burn Intensive Care

**Preceptor:** Nicholas Tran, PharmD, BCPS, BCCCP

### **Rotation Description:**

Residents on the burn ICU rotation will provide in-depth pharmacotherapeutic care to patients in the burn ICU with additional opportunity to provide care in outpatient burn clinic. The resident will work closely with the burn team as well as the critical care consult service to provide comprehensive care including, kinetic monitoring, nutrition support, order review/verification, medication reconciliation, wound care, patient education, and drug information to the team/staff. In addition to patient care activities, the resident will engage in topic discussions, provide an in-service to the staff, and literature/guideline review. Depending on patient load on the ICU service, residents may also follow patients in the step down burn unit.

### [Nicholas Tran, PharmD, BCPS, BCCCP](#)

Critical Care Clinical Pharmacist

Dr. Tran received his Doctor of Pharmacy degree from the University of Florida College of Pharmacy in Gainesville, FL. Upon graduation, he completed an ASHP-accredited PGY-1 pharmacy residency and PGY-2 Critical Care pharmacy residency training at Tampa General Hospital. Currently, he provides care to patients in the medical/surgical ICU and burn units, and he participates in multidisciplinary rounds with the USF Pulmonary Critical Care Team and Burn unit. Dr. Tran precepts both PGY-1 pharmacy and PGY-2 Critical Care pharmacy residents and has served as a research advisor and mentor. He also holds an appointment with the University of Florida College of Pharmacy and precepts Advanced Pharmacy Practice Experiences students. He remains an active member of the American Burn Association and the Florida Society of Health-System Pharmacists. Dr. Tran's practice interests include burn resuscitation, septic shock, and antimicrobial PK/PD optimization in patients with major burn injuries.





## Preceptor Profiles and Rotation Descriptions

---

**Rotation:** Medical ICU

**Preceptors:** Kevin Ferguson, PharmD, BCPS, BCCCP; Uyen Diep, PharmD, BCCCP; Carolyn Da Silva, PharmD

### Rotation Description:

The Medical ICU rotation is a 1 month learning experience that provides PGY1 and PGY2 residents the opportunity to care for complicated, critically ill patients. Residents will evaluate patient specific drug therapies with an emphasis on integration of pathophysiology, pharmacology, and therapeutics in order to devise appropriate pharmaceutical care plans. Residents will perform both unit based and service based activities on a daily basis. Resident activities include (but are not limited to) morning rounds with MICU team, managing pharmacotherapy consult service, order verification, communication with physicians and nurses, medication reconciliation, medication profile reviews, assisting the medical team with medication optimization, performing drug information research; education through topic discussions, journal clubs, and team inservices. Residents will have the opportunity to assist with precepting pharmacy students when they are on rotation. PGY2 residents will have a balance shift that focuses more on clinical activities compared to unit based residents. In addition, PGY2 residents will have a larger patient load and will assist with precepting PGY1 residents when they are on rotation.

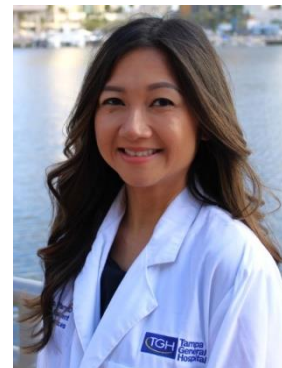
[Kevin Ferguson, PharmD, BCPS, BCCCP](#)  
Critical Care Clinical Pharmacist, Medicine

Dr. Ferguson received his Doctor of Pharmacy degree from the University of Florida College of Pharmacy in Gainesville, FL. He began his pharmacy career at Florida Hospital in Orlando and later joined the staff at Tampa General Hospital. For the past eleven years, he has been part of the healthcare team for the Medical ICU. His responsibilities include providing pharmaceutical care services for the patients in the MICU and also participating in daily rounds with the USF Pulmonary Critical Care team. Dr. Ferguson's involvement with the pharmacy residency program includes initial resident training and precepting both PGY1 and PGY2 residents for the Medical ICU rotation. Dr. Ferguson holds appointments as Clinical Assistant Professor at the University of Florida College of Pharmacy, LECOM School of Pharmacy, and Florida A&M College of Pharmacy. In 2012, Dr. Ferguson received the TGH President's Award. He is an active member of the Society of Critical Care Medicine (SCCM) and is involved with the research committee of the Society's Pharmacy section. Dr. Ferguson is also an active member of the American College of Clinical Pharmacy (ACCP).



[Uyen Diep, PharmD, BCCCP](#)  
Critical Care Clinical Pharmacist

Dr. Diep received her Doctor of Pharmacy degree from the University of Florida. She then went on to complete an ASHP-accredited PGY1 and PGY2 Critical Care pharmacy residency at Tampa General Hospital (TGH). She continued her career at TGH covering a multitude of critical care areas. Dr. Diep precepts PGY1 and PGY2 critical care residents, has served as a teaching advisor, research advisor, mentor and staffing preceptor. Dr. Diep is an active member of the Society of Critical Care Medicine (SCCM) and SCCM Florida Chapter. She currently serves on various committees at TGH such as the nutrition support group and clinical optimization.



[Carolyn Da Silva, PharmD](#)  
Clinical Pharmacist, Vascular and Thoracic Critical Care



## Preceptor Profiles and Rotation Descriptions

---

Dr. Da Silva received her Doctor of Pharmacy degree from LECOM School of Pharmacy in 2019 and completed an ASHP-accredited PGY-1 pharmacy residency at Tampa General Hospital. She began her pharmacy career at Sarasota Memorial Hospital in Sarasota, FL where she furthered her practice in internal medicine, critical care, and emergency medicine before joining the critical care pharmacy team in 2022. Currently, she provides care to patients in vascular and thoracic surgery units and participates in multidisciplinary rounds in vascular ICU. Dr. Da Silva precepts PGY1 residents and serves as a mentor and social committee leader. She is also an active member of the Residency Advisory Committee.



**Rotation:** Cardiothoracic ICU (CTICU)

**Preceptor:** Mila Friedman, PharmD, BCPS

### Rotation Description:

PGY2 or experienced PGY1 residents on the CTICU rotation will provide in-depth pharmacotherapeutic care to a variety of patients who had undergone cardiothoracic surgical procedures (CABG, valve replacements/repairs, cardiac transplant, pulmonary transplant, VAD, ECMO, etc.). Residents will assume daily responsibilities of a unit-based pharmacist including order verification, in depth profile review and optimization, medication reconciliation, patient education, and will serve as a drug information resource to both nursing and medical teams. Residents will attend daily rounds with the primary Pulmonary Critical Care, Cardiothoracic Surgery, and Cardiology services in this closed unit. Evaluation of pertinent literature and discussion of guideline-based care will also occur.

[Lyudmila Friedman, PharmD, BCPS](#)

Critical Care Clinical Pharmacist, Cardiothoracic Surgery

Dr. Friedman received her Doctor of Pharmacy degree from the University of Florida College of Pharmacy in Gainesville, FL. She went on to complete an ASHP-accredited pharmacy practice residency at James A. Haley VAMC in Tampa, FL. She joined the clinical pharmacy staff at Tampa General Hospital in 2003. Dr. Friedman's responsibilities include providing pharmaceutical care services for the patients in the CTSICU and VICU. She is involved with the pharmacy residency program where she assists in initial resident training and offers PGY-2 elective critical care rotation in cardiothoracic surgery.



**Rotation:** Neurocritical care

**Preceptor:** Nerea Irusta, PharmD, BCPS, BCCCP

### Rotation Description:

This unit-based rotation is designed to provide the pharmacy resident with practical and clinical experience in the fields of Neurology and Neurosurgery, specifically Neurocritical Care. This rotation will provide residents opportunities in assessing and evaluating patient specific drug therapies with an emphasis on integration of pathophysiology, pharmacology and therapeutics to devise appropriate pharmaceutical care plans for patients in the Neuroscience ICU. Residents will serve as a drug-information resource for the Neuroscience teams, be actively involved in fulfilling pharmacy services, and will have opportunities to provide in-services to the health-care team. Unit-based responsibilities will be integrated into the rotation and include order verification, pharmacotherapy consults, patient scoring alerts and medication reconciliation. In addition, residents will be an integral part of the

## Preceptor Profiles and Rotation Descriptions

health-care team by participating in daily patient care rounds with the Neurocritical Care Service. Lastly, evaluation of pertinent literature and discussion of guideline-based care will also occur throughout the learning experience.

### [Nerea Irusta, PharmD, BCPS, BCCCP](#)

Critical Care Clinical Pharmacist, Neurosciences

Dr. Irusta received her Doctor of Pharmacy degree from the Philadelphia College of Osteopathic Medicine School of Pharmacy in Suwanee, GA in 2018. Upon graduation, she completed an ASHP-accredited pharmacy practice residency at Piedmont Columbus Regional in Columbus, GA. The following year, she completed an ASHP-accredited specialty residency in Critical Care at Jackson Memorial Hospital in Miami, FL. Since then, Dr. Irusta has worked in various ICU settings and joined Tampa General Hospital in 2022 as a critical care float pharmacist. Currently, she provides pharmaceutical care services to patients in the Neurocritical Care Unit including daily multidisciplinary rounds with the Neurocritical Care team. Dr. Irusta precepts PGY1 and PGY2 critical care residents, has served as a teaching preceptor, research advisor and mentor. She also serves on various committees at TGH including the Residency Advisory Committee and TGH Delirium Committee.



**Rotation:** Cardiology Critical Care/Cardiology Medicine

**Preceptor:** Czarina Bock, PharmD, BCPS, BCCCP

### **Rotation Description:**

Cardiology rotation is designed to provide the pharmacy resident with practical and clinical experience in the field of cardiovascular medicine. Residents will be an integral part of the health-care team by participating in cardiology medicine rounds as well as following a variety of patients within the Cardiac Intensive Care Unit. This rotation is designed to provide residents opportunities in assessing and evaluating patient specific drug therapies with an emphasis on integration of pathophysiology, pharmacology and therapeutics to devise appropriate pharmaceutical care plans for cardiology patients. Residents will serve as the drug-information resource for the cardiology team, be actively involved in fulfilling pharmacy services (e.g. patient education), and will have opportunities to provide in-services to the health-care team. PGY2 residents will be responsible for overseeing students and PGY1 residents if applicable, will work more independently and will be responsible for managing more patients.

### [Czarina Bock, PharmD, BCPS, BCCCP, CACP](#)

Critical Care Clinical Pharmacist, Cardiology

Dr. Czarina Bock is a Clinical Pharmacist specializing in cardiac critical care at Tampa General Hospital. She earned her undergraduate degree from the University of South Florida and her Doctor of Pharmacy degree from Nova Southeastern University in 2009. She completed an ASHP-accredited pharmacy practice residency at Bay Pines Veterans Affairs Medical Center. Since joining Tampa General Hospital in 2010, Dr. Bock has served in various clinical roles, including IV room operations and pharmacy supervision. In 2015, she transitioned into her current role as the cardiac critical care pharmacist, where she provides expert pharmaceutical care to critically ill cardiac patients. Dr. Bock serves as the Residency Program Director for the PGY1 Pharmacy Residency Program, mentoring pharmacy interns and residents in the cardiac ICU. She actively participates in scholarly activities such as research and teaching, and contributes to organizational task forces and committees. She also assists with order-set and protocol development to improve clinical workflows and patient safety. Her professional service includes





## Preceptor Profiles and Rotation Descriptions

membership in the Anticoagulation Forum, the American College of Clinical Pharmacy (ACCP), and the Society of Critical Care Medicine (SCCM). Dr. Bock was honored with the Pharmacist of the Year Award in 2014 and the Golden Heart Award in 2021 for her outstanding contributions to patient care and pharmacy practice.

### Hematology/Oncology

**Preceptor(s):** Leann Koontz, PharmD, BCPS, BCOP; Linda Linderbeck, RPh, BCOP; Katie Hamilton, PharmD, BCPS; Alexa Rodriguez, PharmD

#### Rotation Description:

Residents on the Hematology/Oncology rotation will work closely with the TGH Cancer Institute Hematology/Oncology medical team, radiation oncology, nursing staff and other practitioners to provide care to newly diagnosed oncology patients, ambulatory care based patients receiving treatment, and patients receiving inpatient chemotherapy with a focus in transitions of care. Residents will be responsible for collaborating with the multidisciplinary team to provide comprehensive care including medication reconciliation, daily in-depth profile review and optimization, and triage of drug information requests from the team. In addition, the resident will provide medication education to patients and staff, including at least one nursing and one provider presentation during the rotation. There will also be an opportunity to attend several tumor boards during the rotation as well as observe a gyn-onc surgery. Evaluation of cancer treatment guidelines and primary literature review will be as needed as residents design and recommend treatment and support plans for patients receiving chemotherapy. The resident will co-precept students while on rotation which will include guiding topic discussions and journal reviews to the students.

**Leann M Koontz, PharmD, BCPS, BCOP**  
Cancer Institute Pharmacy Supervisor

Dr. Leann Koontz received her Bachelor of Pharmacy degree from The Ohio State University. She then completed an ASHP-accredited PGY1 residency at The Queen's Medical Center in Honolulu, Hawaii. Upon completion of her residency, Dr. Koontz worked as an ambulatory care clinical pharmacist for three years. Dr. Koontz then relocated to Arizona where she worked as an oncology and critical care clinical pharmacist at two separate hospitals. She also completed her PharmD from Creighton University in 2001. In 2004, Dr. Koontz relocated to Tampa and joined Tampa General Hospital in 2005. She currently works at the new TGH Cancer Institute where she actively manages cancer insitute patients. While at Tampa General Hospital, Dr. Koontz has also been involved in many programs that were piloted on her previous unit, including anticoagulation education streamlining, heart failure initiatives and meds to beds pharmacy delivery service, resulting in a poster presentation at Midyear 2013. In 2013, Dr. Koontz received a nomination for the TGH President's Award and was selected as preceptor of the year during pharmacy week. Dr. Koontz currently serves on the best practice committees and residency advisory committee. She is also an active member of the Hematology Oncology Pharmacy Association. Her key areas of interest include hematology, oncology, immunology, and pain management. Currently, Dr. Koontz offers an ambulatory care and hematology/oncology rotation for pharmacy students and PGY1/PGY2 residents.





## Preceptor Profiles and Rotation Descriptions

### Linda R. Linderbeck, PharmD, BCOP

Pharmacotherapy Specialist, Hematology/Oncology

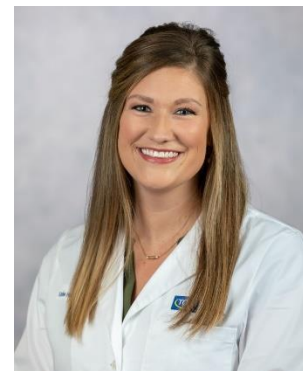
Linda R. Linderbeck received her Bachelor of Pharmacy degree from the University of Connecticut in 1990. She began her practice at the Yale-New Haven Hospital in New Haven, CT in the areas of nutrition support, hematology, oncology and bone marrow transplant. Her current practice at Tampa General Hospital includes provision of antimicrobial pharmacokinetics, parenteral nutrition and drug monitoring to medicine patients in addition to pain management, supportive and anti-neoplastic therapies to hematology and oncology patients. She currently serves on the hospital's pain management committee and precepts pharmacy interns, advanced practice students, and PGY-1 pharmacy practice residents in the areas of medicine and hem-onc. She is an active member of the American Society of Clinical Oncology, American College of Clinical Pharmacy, and the Hematology Oncology Pharmacy Association.



### Katie Hamilton, PharmD, BCPS

Clinical Pharmacist, Medicine, Hematology/Oncology

Dr. Hamilton received her Doctor of Pharmacy degree from the University of Tennessee in 2019. She went on to complete an ASHP-accredited PGY1 pharmacy practice residency at Tampa General Hospital. Upon finishing the residency program, she transitioned into the role of a clinical staff pharmacist at Tampa General Hospital. Dr. Hamilton is responsible for providing pharmaceutical care to patients in the hematology/oncology unit, including managing inpatient chemotherapy and assisting with transitions of care as a part of the Oncology Pharmacy Service Line. She precepts pharmacy interns as well as pharmacy practice residents and is frequently involved in the education of healthcare providers. She is an active member of the American College of Clinical Pharmacists and the American Society of Health-Systems Pharmacists.



### Alexa Rodriguez, PharmD

Clinical Pharmacist

Dr. Alexa Rodriguez earned her Doctor of Pharmacy degree from the University of South Florida in 2022. She completed an ASHP-accredited pharmacy practice residency with a focus on acute care at Lakeland Regional Health. In 2024, she joined Tampa General Hospital, where she currently practices in the hematology/oncology units. Her clinical service encompasses both benign and malignant hematologic conditions, as well as solid tumors, including gynecologic and neurologic malignancies. Dr. Rodriguez works closely with multidisciplinary teams from the TGH Cancer Institute, Moffitt Cancer Center, and the University of South Florida. She also serves as a preceptor for PGY-1 pharmacy residents, leading the anchor rotation and mentoring those with a particular interest in hematology/oncology.



## Solid Organ Transplant

**Preceptor(s):** Erin Bilgili, PharmD; Angela Tong Logan, PharmD, BCPS, BCTXP; Bailey Wise, PharmD, BCPS, BCTXP; Lyndsey Bowman, PharmD, BCPS, BCTXP, FCCP, FAST; Allyssa Webb, PharmD, BCTXP; Amy Rumore, PharmD, BCPS; Meghan Mullaney, PharmD; Yen Tran, PharmD, BCPS, BCTXP; Estefany Hoffman-Yanqui, PharmD, BCTXP; Danielle Kovač, PharmD, BCTXP

## Preceptor Profiles and Rotation Descriptions

### Rotation Description:

Residents on the solid organ transplant rotation will provide in-depth pharmacotherapeutic care to a variety of newly transplanted and readmitted heart, lung, kidney, or liver transplant recipients as well as transplant candidates throughout the hospital. As a service-line based rotation, residents will be responsible for collaborating with the multidisciplinary team as well as covering unit-based pharmacists to provide comprehensive care including admission and discharge medication reconciliation, daily in-depth profile review and optimization, patient education, and triage of drug information requests from the team. Residents will also provide transition of care services in assisting their teams with coordinating discharge prescriptions. Knowledge of immunosuppressants and antimicrobial therapy is emphasized, as well as internal medicine, critical care, and care of the surgical patient. Evaluation of pertinent literature and discussion of guideline-based care will also occur.

#### Erin Bilgili, PharmD

Pharmacotherapy Specialist, Solid Organ Transplant

Dr. Erin Bilgili received her Bachelor of Science and Doctor of Pharmacy degrees from Auburn University Harrison School of Pharmacy in Auburn, AL. She then went on to complete an ASHP-accredited PGY1 Pharmacy Practice Residency at Ascension Sacred Heart Hospital in Pensacola, FL, followed by a PGY2 Solid Organ Transplant Specialty Residency at Houston Methodist Hospital in Houston, TX. Upon completion of residency training, she practiced as a cardiothoracic organ transplant pharmacotherapy specialist at the University of Alabama at Birmingham (UAB) Hospital in Birmingham, AL before joining the transplant specialist pharmacy group at Tampa General Hospital in 2020. Dr. Bilgili's current area of practice focuses on the care of MCS and heart transplant recipients, including pre-transplant evaluations, clinical rounds, patient education and posttransplant ambulatory care clinics, while also serving on various department committees. She precepts PGY1 pharmacy practice and PGY2 transplant residents in addition to student pharmacist interns as a clinical assistant professor for UF College of Pharmacy. Her professional service activities include active membership in the American Society of Transplantation, the Transplant Pharmacy Community of Practice, the International Society of Heart and Lung Transplantation, and the American College of Clinical Pharmacy.



#### Angela T. Logan, PharmD, BCPS, BCTXP

Pharmacotherapy Specialist, Solid Organ Transplant

Dr. Logan received her Doctor of Pharmacy degree from University of Texas College of Pharmacy in 2009 and completed her first year ASHP-accredited general pharmacy practice residency at the Michael DeBakey VA Medical Center in Houston, TX. She completed her second year of solid organ transplant residency training at Tampa General Hospital. Currently, she serves as the lung transplant specialist and PGY2 Solid Organ Transplant residency director. Dr. Logan is involved in various aspects of the care of solid organ transplant recipients, including pre-transplant evaluations, clinical rounds, patient education and post-transplant ambulatory care clinics. Dr. Logan currently holds faculty appointments as Clinical Assistant Professor with the UF College of Pharmacy and USF College of Pharmacy. She is a member of International Society of Heart and Lung Transplant, American College of Clinical Pharmacy, and the Transplant/Immunology PRN group. She currently serves on various committees, assists in order set and protocol development, and precepts pharmacy students, PGY1 and PGY2 residents.



## Preceptor Profiles and Rotation Descriptions

### Bailey Wise, PharmD, BCPS, BCTXP

Abdominal Ambulatory Care Transplant Specialist

Dr. Wise is a graduate of University of Florida College of Pharmacy and completed her PGY1 training and PGY2 Solid Organ Transplant residency at the Medical University of South Carolina in Charleston, SC. Prior to joining the team, she spent 3 years serving as an abdominal transplant specialist at Ochsner Health in New Orleans, LA.



### Lyndsey J. Bowman, PharmD, FAST, BCPS, FCCP

Pharmacotherapy Specialist, Solid Organ Transplant

Dr. Bowman received her Bachelor of Science and Doctor of Pharmacy degrees from St. Louis College of Pharmacy. She then went on to complete an ASHP-accredited PGY1 Pharmacy Practice Residency and PGY2 Critical Care Specialty Residency at the Medical University of South Carolina in Charleston, SC. Upon completion of residency training, she joined the team of transplant specialists as an abdominal organ transplant pharmacotherapy specialist at Barnes-Jewish Hospital (BJH) in St. Louis, MO. During her time at BJH, Dr. Bowman served as the Residency Program Director for the PGY2 Solid Organ Transplant Residency Program and the clinical supervisor of the transplant pharmacists. After 8 years at BJH, she joined the transplant clinical pharmacy group at Tampa General Hospital. In her current role, she has successfully established a new clinical pharmacy service and presence on the transplant nephrology team. As a clinical researcher, Dr. Bowman also contributes to medical literature through active publication in peer-reviewed journals and book chapters. Her research interests include viral infections, induction immunosuppression, alterations in maintenance immunosuppression regimens, and outcomes research in kidney and liver transplantation. Dr. Bowman's professional service activities include active membership in the American Society of Transplantation, the Transplant Pharmacy Community of Practice, and the American College of Clinical Pharmacists.



### Ally Webb, PharmD, BCTXP

Pharmacotherapy Specialist, Solid Organ Transplant

Dr. Webb received her Bachelor of Science degree from University of South Florida and Doctor of Pharmacy degree from University of Florida College of Pharmacy. She completed her PGY1 Pharmacy Practice Residency at University of Cincinnati Medical Center in Cincinnati, Ohio in 2019 and PGY2 Solid Organ Transplant Residency at Tampa General Hospital in 2020. She currently serves as a residency preceptor for kidney and liver transplant rotations as well as a teaching co-preceptor. Dr. Webb has a professional interest in teaching, she provides transplant focused lectures in pharmacotherapeutics and pharmacology at USF College of Pharmacy, provides transplant pharmacotherapy lectures to ICU nurses, and enjoys precepting residents and students. She is also an active member of American Society of Transplantation and American College of Clinical Pharmacists Immunology/Transplant PRN.



### Amy Rumore, PharmD, BCPS

Pharmacotherapy Specialist, Solid Organ Transplant



## Preceptor Profiles and Rotation Descriptions

Dr. Amy Rumore received her Doctor of Pharmacy degree from the University of Florida College of Pharmacy in 2010. She then went on to complete an ASHP-accredited pharmacy practice residency at Tampa General Hospital. Upon completion of residency, Dr. Rumore continued at Tampa General Hospital to serve as a unit-based clinical pharmacist on the transplant unit and then transitioned to a solid organ transplant specialist, in which she is involved in the care of all solid organ transplant patients at TGH. She currently serves as a preceptor to both PGY1 and PGY2 residents on solid organ transplant rotations, as well as in research. Dr. Rumore is a member of the American Society of Transplantation and the American College of Clinical Pharmacy.



### [Meghan Mullaney, PharmD](#)

Pharmacotherapy Specialist, Solid Organ Transplant

Dr. Mullaney received her Bachelor of Science degree in Molecular and Microbiology from the University of Central Florida followed by her Doctor of Pharmacy degree from the University of Florida College of Pharmacy. She then completed an ASHP-accredited PGY1 Pharmacy Practice Residency at Florida Hospital Orlando (Advent Health Orlando). Upon completion of her residency, she joined Tampa General Hospital as a clinical pharmacist and provides pharmaceutical care for Solid Organ Transplant patients. She serves as a preceptor for PGY1 and PGY2 Solid Organ Transplant residents. She is also a member of the Clinical Pharmacy Optimization and Medication Communication Workgroups and Residency Advisory Committee.



### [Yen Tran, PharmD, BCPS, BCTXP](#)

Pharmacotherapy Specialist, Solid Organ Transplant

Dr. Yen Tran received his Doctor of Pharmacy degree from College of Pharmacy at Nova Southeastern University in 2019. He completed PGY-1 Pharmacy Practice Residency at AdventHealth Orlando, FL and PGY-2 Solid Organ Transplant Pharmacy at Mayo Clinic Hospital in Rochester, MN. Upon completion of his residency, he transitioned to practice as transplant pharmacist at Mayo Clinic Hospital in Jacksonville, FL before joining the transplant specialist pharmacy group at Tampa General Hospital in 2023. In his current role, Dr. Tran provides inpatient coverage rotating between all organs, and outpatient services in kidney transplant clinic. He has interest in quality improvement and transplant medication management. He is active member of American Society of Transplantation, American College of Clinical Pharmacists Immunology/Transplant PRN.



### [Estefany Hoffman-Yanqui, PharmD, BCTXP](#)

Pharmacotherapy Specialist, Solid Organ Transplant

Dr. Yanqui received her Doctor of Pharmacy degree from University of Florida College of Pharmacy in 2020. She went on to complete her ASHP-accredited PGY-1 Pharmacy Practice Residency at Massachusetts General Hospital, and a PGY-2 Solid Organ Transplant residency at University of Cincinnati Medical Center (UCMC). Upon completion of residency, she transitioned to practice as an abdominal clinical pharmacy specialist at UCMC before joining the transplant specialist pharmacy group at Tampa General Hospital in 2025. In her current role, Dr. Yanqui provides both inpatient and outpatient coverage, rotating between all organ groups. Her professional service activities





## Preceptor Profiles and Rotation Descriptions

---

include active membership in the American Society of Transplantation and the American College of Clinical Pharmacy.

### [Danielle Kovač, PharmD, BCTXP](#)

Abdominal Ambulatory Care Transplant Specialist

Dr. Kovač received her Bachelor of Science degree from the University of Central Florida and her Doctor of Pharmacy degree from the University of Florida College of Pharmacy. She then completed both her PGY1 Pharmacy Practice Residency and PGY2 Solid Organ Transplant Residency at Emory University Hospital in Atlanta, GA. Upon completion of residency training, she began her career as the liver transplant clinical pharmacy specialist at NewYork-Presbyterian Hospital/Columbia University Irving Medical Center in New York, NY. After over 6 years in this role, she joined the team of transplant pharmacists at Tampa General Hospital as an abdominal ambulatory care transplant specialist. Her professional interests include immunosuppression optimization, clinical outcomes improvement in transplant, and quality improvement.



## Emergency Medicine

### **Preceptor(s):**

Alyssa Chappell, PharmD, BCPS; Ana Avram, PharmD, BCPS; Alexis Hochstetler, PharmD; Matthew Noble, PharmD; Jenna Forry, PharmD, BCPS; Michelle Zacchetti, PharmD; David Taska, PharmD, MS; Brittany Allison, PharmD, MBA; Ally Funk, PharmD, DABAT

### **Description:**

The Emergency Medicine rotation experience involves the provision of direct patient care in the emergency department (ED) setting. It is designed to further develop the resident's knowledge and understanding of the pharmacotherapy of emergency medicine patients with a variety of disease states in a team-based environment. The resident will gain an understanding of emergency medical care from triage to discharge from the ED and the hospital and an appreciation of how the emergency department pharmacist can enhance the quality of pharmaceutical care delivered in the department and improve the continuity of care throughout the patient's hospital stay. Because there are not organized rounds in the emergency department, the resident will be expected to review all assigned patients and be prepared to make interventions. PGY1 residents will have a smaller patient load compared with the PGY2 emergency medicine residents who take this rotation, and PGY2 critical care residents will be exposed to all types of patients in the ED, but focus primarily on the intensive care unit-based patients. Evaluation of pertinent literature, discussion of guideline-based care, a journal club, in-service, drug information questions, and resident lead topic discussions will also occur.

## Preceptor Profiles and Rotation Descriptions

### [Alyssa Chappell, PharmD, BCPS](#)

Manager, Pharmacy Patient Care Services

PGY2 Emergency Medicine Residency Director

Dr. Chappell received her Doctor of Pharmacy degree from the University of Florida College of Pharmacy in 2014. Her postgraduate training included a PGY1 pharmacy practice residency and a PGY2 specialty residency in Emergency Medicine at Tampa General Hospital. Her pharmacy career began at Morton Plant Hospital in Clearwater, FL where she served on several hospital committees, assisted in operational oversight of the free-standing Bardmoor Emergency Department, and participated in protocol development and implementation system-wide.

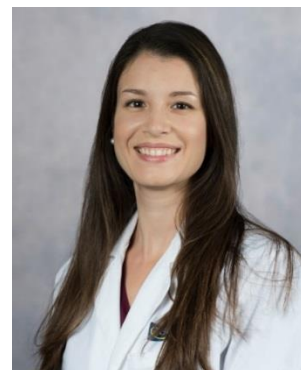
Her current practice area includes direct pharmaceutical care of both Emergency Department and Operating Room patients. She precepts both pharmacy students and residents in the Emergency Department and serves as the program director for the PGY2 Emergency Medicine residency. Dr. Chappell is actively involved with committees, education of healthcare providers, pharmacy administration, and research. She has been published in peer-reviewed journals and is an active member of the American Society of Health-Systems Pharmacists.



### [Ana Avram, PharmD, BCPS](#)

Clinical Pharmacist, ED/OR

Dr. Avram graduated in 2008 with a Doctor of Pharmacy degree from Rutgers University in New Jersey. She then completed both a pharmacy practice residency and a specialty residency in anticoagulation/critical care at the Hospital of The University of Pennsylvania. She joined the clinical pharmacy staff at Tampa General Hospital in 2010. Her current practice area includes provision of pharmaceutical services for patients in the emergency department and operating rooms. Dr. Avram has worked closely with students and residents for emergency department and internal medicine rotations. Dr. Avram is actively involved with several hospital committees and is a member of the Society of Critical Care Medicine (SCCM).



### [Alexis Hochstetler, PharmD, BCCCP](#)

Clinical Pharmacist, Emergency Medicine

Dr. Hochstetler received her Doctor of Pharmacy degree from the University of Florida College of Pharmacy in 2017. She then went on to complete an ASHP-accredited PGY1 pharmacy residency and PGY2 Emergency Medicine specialty residency at UF Health Jacksonville in Jacksonville, FL. She began her career as a practitioner in emergency medicine at Tampa General Hospital in 2019. Dr. Hochstetler is actively involved in precepting pharmacy students and interns as well as PGY1 pharmacy residents. She also acts as a preceptor for the emergency medicine PGY2 resident offering a pediatric emergency medicine rotation as well as emergency medicine critical care. She is also involved with resident research projects and serves as a longitudinal teaching advisor. Dr. Hochstetler is an active member of the American Society of Health-System Pharmacists (ASHP) and the Society of Critical Care Medicine (SCCM).



## Preceptor Profiles and Rotation Descriptions

### Matthew Noble, PharmD Clinical Pharmacist, ED/OR

Dr. Noble received his Doctor of Pharmacy degree from University of South Florida College of Pharmacy in 2019. He went on to complete an ASHP-accredited PGY1 pharmacy practice residency and a PGY2 specialty residency in Emergency Medicine at Tampa General Hospital (TGH). After his post graduate training, Dr. Noble stayed on as an emergency medicine pharmacist at TGH. Dr. Noble is engaged in the residency advisory committee, teaching committee, serves as a teaching preceptor, a residency mentor, and is an active member of the American Society of Health-System Pharmacy and the Society of Critical Care Medicine. Dr. Noble also holds an appointment as a Collaborative Faculty Member at the Taneja College of Pharmacy and teaches a variety of topics within the didactic curriculum.



### Jenna Forry, PharmD, BCPS Clinical Pharmacist, ED/OR

Dr. Forry received her Doctor of Pharmacy degree from the University of Florida College of Pharmacy in 2020. She completed an ASHP-accredited PGY1 pharmacy practice residency and a PGY2 specialty residency in Emergency Medicine at Tampa General Hospital (TGH). Following her post-graduate training, Dr. Forry stayed at TGH to work as an emergency medicine clinical pharmacist at TGH. Dr. Forry is involved in the training of pharmacy students, PGY1, and PGY2 residents in emergency medicine. She serves in various preceptor roles and is on the residency advisory committee. She is a member of the American College of Clinical Pharmacy and the American Society of Health-System Pharmacists.



### Michelle Zacchetti, Pharm.D. Clinical Pharmacist, Emergency Medicine & Critical Care

Dr. Zacchetti received a Doctor of Pharmacy degree from the Virginia Commonwealth University, Medical College of Virginia in 2012. Her postgraduate training included an ASHP-accredited PGY1 pharmacy practice residency at the University of Virginia Health System in Charlottesville, Virginia and an ASHP-accredited PGY2 critical care specialty residency at the Queen's Medical Center in Honolulu, Hawai'i in affiliation with the University of Hawai'i at Hilo College of Pharmacy. Following completion of her residency training, Dr. Zacchetti earned over a decade of experience as a critical care clinical pharmacist specialist, including three years of didactic teaching experience as an Associate Professor. She accepted a critical care clinical pharmacist position at Tampa General Hospital in 2021 with focused practice in the medical intensive care units and has since transitioned to practicing in the Emergency Department in 2025. She is involved in the interdisciplinary code blue recognition and response committee, intradepartmental code review workgroup and the residency advisory committee. She has taken an active role as a PGY1 clinical staffing preceptor and mentor in addition to various other preceptor roles involving pharmacist interns and residents. Dr. Zacchetti is also a member of the American Society of Health-System Pharmacists and the Society of Critical Care Medicine.

### David Taska, PharmD, MS Clinical Pharmacist, ED/OR

Dr. Taska received his Doctor of Pharmacy degree from University of North Carolina – Chapel Hill in 2021. He then went on to complete an ASHP-accredited PGY1 pharmacy residency and PGY2 Emergency Medicine specialty



## Preceptor Profiles and Rotation Descriptions

residency at UF Health Jacksonville in Jacksonville, FL. Upon completion of his residency, Dr. Taska practiced at Nicklaus Children's Hospital in Miami, FL as a pediatric emergency medicine specialist. He has since transitioned to Tampa General Hospital and has since worked as a clinical pharmacist in the Emergency Department. Dr. Taska currently offers the pediatric emergency medicine rotation and serves as a research preceptor for the PGY2 EM resident. Additionally, he precepts pharmacy students and PGY1 residents. He is also a member of the American Society of Health-System Pharmacists.

### [Brittany Allison, PharmD, MBA](#)

Clinical Pharmacist, Emergency Medicine

Dr. Allison received her Doctor of Pharmacy degree from The University of Tennessee in 2022. She completed an ASHP-accredited PGY1 pharmacy practice residency and a PGY2 Emergency Medicine specialty residency at AdventHealth Orlando in Orlando, FL. Upon completion of residency, Dr. Allison began her career as an emergency medicine practitioner at St. Mary's Medical Center in West Palm Beach, FL. She has since transitioned to a position at Tampa General Hospital (TGH) as a clinical pharmacist in the Emergency Department. Dr. Allison serves as a preceptor for both the PGY1 and PGY2 Emergency Medicine residency programs.

### [Alexandra "Ally" Funk, PharmD, DABAT](#)

Managing Director, Florida Poison Information Center – Tampa

Alexandra "Ally" Funk, PharmD, DABAT is a graduate of D'Youville University School of Pharmacy (Buffalo, NY) in 2015 and completed her pharmacy residency at Advent Health Orlando (Orlando, FL) followed by a clinical toxicology fellowship at the Georgia Poison Center (Atlanta, GA) in 2017. She began her Poison Center leadership career as the Managing Director of the Central Ohio Poison Center (Columbus, OH) after practicing as an emergency medicine pharmacist at Vidant Medical Center (Greenville, NC). Dr. Funk currently is the Managing Director for the Florida Poison Information Center – Tampa. Dr. Funk serves as an American Academy of Clinical Toxicology (AACT) Board of Trustee and is actively involved in leadership and committee roles within America's Poison Center (AAPCC) and American Board of Applied Toxicology (ABAT) organizations. Her clinical interests include childhood poisonings and poison prevention, breastfeeding and lactation, drugs of abuse, diversity equity and inclusion, and poison center administration. Outside of work, Dr. Funk enjoys adventuring outdoors with her husband, toddler son, and two dogs.



## Administration

### [Maja G. Gift, MHA, BS Pharm](#)

Administrator, Pharmacy Services

Maja received a Bachelor of Pharmacy degree from University of Utah in 1983 and completed a PGY-1 residency at Children's National Medical Center in Washington, D.C. in 1984. In 2013, she received a Master's in Healthcare Administration degree from Ohio University. Maja is the current Director of Pharmacy/Administrator of Pharmacy Services at Tampa General Hospital and has served in this role since 1997. She holds appointments as clinical assistant professor at the University of Florida College of Pharmacy Department of Pharmacy Practice, at University of South Florida College of Pharmacy, Florida A and M College of Pharmacy and is a clinical affiliate assistant professor at Nova Southeastern University College of Pharmacy.







## Preceptor Profiles and Rotation Descriptions

---

Maja is a relentless advocate for the profession of pharmacy. As a result of her advocacy, pharmacy services at TGH have grown significantly. Key programs developed include, a fully integrated pharmacy practice model with unit-based clinical pharmacists in all inpatient areas, PGY-1 and PGY-2 residency programs, specialty pharmacy program, ambulatory clinical pharmacists providing care transition services, and many others.

[Maresa D. Glass, PharmD, BCCCP, FCCM, DPLA](#)

PGY-2 Critical Care Residency Director

Assistant Director, Clinical Pharmacy Services



Dr. Glass received her Doctor of Pharmacy degree from the University of Florida, College of Pharmacy in 2002. She went on to complete an ASHP accredited pharmacy practice residency at Memorial Health University Medical Center in Savannah, Georgia. Upon completion of the residency program, Dr. Glass came to Tampa General Hospital as a critical care clinical pharmacist focusing on care of the adult Medical ICU and Burn ICU population. She spent the majority of her career as the Pharmacotherapy Coordinator in Critical Care, coordinating the pharmaceutical care of Tampa General Hospital's adult critically ill patients and initiating a number of protocols, guidelines, and educational programs that focus on improving patient safety for the critically ill patient. Dr. Glass is currently the Assistant Director of Clinical Pharmacy Services and serves as Director of the PGY-2 Critical Care Pharmacy Residency program. She is an active member of the Society of Critical Care Medicine (SCCM), author, and investigator. Dr. Glass leads the hospital's multidisciplinary Medication Management Process Team; a group that focuses on optimizing medication use. Dr. Glass also serves as a liaison between the pharmacy department and the Epic EMR build teams, working to identify and build system changes to improve patient safety and end user workflow.

## Longitudinal Experiences

---

### Transitions of Care

**Preceptor(s):** Amanda Martinez, PharmD, BCACP, CPh; Delilah Blanco, PharmD, BCACP, CPh; Erica Walker, PharmD, BCACP, CPh, Med

#### **Rotation Description:**

Transitions of care service is a required longitudinal experience for the PGY1 Residency Program. This learning experience is designed to provide residents with a comprehensive overview of how patients transition throughout their hospital stay and how to properly triage all medication issues to ensure patients are admitted and discharged with a complete and accurate medication regimen. The focus is on training and preparing residents to function in the role of a transitions of care pharmacist and for them to understand how to initiate and complete medication reconciliation at different stages of a patient's hospitalization. The resident will participate in both the pharmacist led transitions of care service and the Leapfrog hospital survey process. Through both of these initiatives the resident will gain full exposure to transitions of care by completion of medication histories, admission and discharge medication reconciliation, and discharge medication counseling.

## Preceptor Profiles and Rotation Descriptions

### Amanda Martinez, PharmD, BCACP, CPh

Pharmacotherapy Specialist, Transitions of Care

Dr. Amanda Martinez received her Doctor of Pharmacy degree from Mercer University in Atlanta, GA in 2011. The following year, she completed an ASHP-accredited PGY1 residency focused in primary care at Bay Pines Veterans Affairs Medical Center in St. Petersburg, FL. After residency, Dr. Martinez began her clinical practice at Tampa General Hospital in 2012. During her career at TGH, she has staffed as a clinical pharmacist in the Emergency Department, Pharmacotherapy Specialist in Ambulatory Care, and now a Pharmacotherapy Specialist in Transition of Care. While at TGH, she has been instrumental in the implementation and expansion of several pharmacy services such as TOC Medication History Program, Chronic Care Management, Remote Patient Monitoring, and Transitional Care Management. Dr. Martinez currently assists with staffing the multidisciplinary TGH Transitions of Care Center, ensuring safe handoffs to our post-acute providers, and implementing new pharmacy services in the post-acute space. Dr. Martinez serves as a preceptor for both the PGY1 and PGY2 Ambulatory Care residency programs (Research and Transitions of Care). She also serves as an Assistant Professor for the University of South Florida College of Pharmacy. She is a member of Vizient's Ambulatory Care Development Committee and also serves on Section Advisory Groups for ASHP. Her passion, teaching, and research include innovation, expanding pharmacists role in patient care, chronic disease state management and cardiology.



### Delilah Blanco, PharmD, BCACP, CPh

Pharmacotherapy Specialist, Transitions of Care

Dr. Delilah Blanco received her Doctor of Pharmacy from Texas Tech University Health Sciences Center School of Pharmacy in 2017. She then moved to Tampa, Florida to complete her ASHP-accredited PGY1 Pharmacy Practice Residency and PGY2 Ambulatory Care Pharmacy Residency at Tampa General Hospital. Delilah began her career within the outpatient pharmacotherapy clinic setting serving as a clinical pharmacist for three Tampa General Medical Group clinics for several years. She now practices full time with the Tampa General Hospital Transitional Care Center. Their multidisciplinary service is aimed at improving medication safety and optimization while ensuring patients are successfully transitioned from the hospital back to the outpatient setting. Delilah's areas of clinical practice and research interests include transitions of care, cardiology, and the integration of pharmacy practice in various healthcare settings. She is currently involved in various organizational task forces, department committees, is an active member of the Residency Advisory Committee, and the Florida Society of Health Systems Pharmacists Ambulatory Care Clinical Forum.



### Erica Walker, PharmD, BCACP, CPh, MEd

Pharmacotherapy Specialist, Transitions of Care

Dr. Erica Walker received her Doctor of Pharmacy degree from the University of Florida College of Pharmacy St. Petersburg Campus in 2016 and completed an ASHP-accredited pharmacy practice residency at Tampa General Hospital. Upon completion of her residency, Dr. Walker joined Tampa General Hospital as an ambulatory care pharmacist before moving over to the Transitions of Care Team in 2024. Her clinical practice responsibilities include medication discharge review, transitions of care, and patient teaching/education. Dr. Walker also serves as a Transitions of Care preceptor for local colleges of pharmacy and serves as one of the residency preceptors for the Tampa General





## Preceptor Profiles and Rotation Descriptions

---

Hospital PGY1 and PGY2 residency programs. Her teaching and research interests include expanding pharmacy services, diabetes education and management, pharmacist lead transitions of care, and anticoagulation.

### Teaching and/or Staffing

#### Longitudinal Experience - Teaching:

##### Preceptors:

###### PGY1:

Kristy Shaeer, PharmD, MPH, BCIDP  
Melissa Noble, PharmD, BCCCP  
Chrissy Tabulov, PharmD, BCPPS  
Erini Serag-Bolos, PharmD  
Jennifer Marsh, PharmD, BCCCP  
Shannon Hasara, PharmD

###### PGY2:

Luke Posgai, PharmD  
Ally Webb, PharmD, BCTXP  
Meghan Mullaney, PharmD  
Nishi Karamsadkar, PharmD, BCACP  
Alexis Hochstetler, PharmD, BCCCP  
Matthew Noble, PharmD  
Austin Burnette, PharmD

Residents will participate in a variety of teaching activities taught and evaluated through the longitudinal teaching learning experience. The purpose of such activities is to foster development and refinement of the resident's therapeutic knowledge base, communication and presentation skills, literature evaluation skills, and to promote the effectiveness of the resident as a teacher and presenter. The intention will be to expose the residents to a variety of teaching environments, audiences, and teaching methods. Additional teaching opportunities can be explored based on resident interest and need, including a teaching certificate program.

#### Longitudinal Experience - Staffing:

##### Preceptors:

###### PGY1:

Sarah Radtke, PharmD  
Rachel Allen, PharmD  
Jaleesa Dekilder, PharmD  
Jill Meyer, PharmD  
Kelsey Gober, PharmD  
Jenny McCabe, PharmD

###### PGY2:

Thomas Liu, PharmD, BCPS, BCIDP  
Nerea Irusta, PharmD, BCCCP  
Jenna Forry, PharmD, BCPS  
Tasha Butler, PharmD  
Ana-Maria Diaz, PharmD

The staffing rotation is a longitudinal experience designed to provide the resident with opportunities to be involved in the medication distribution process, the pharmacy department, and within the healthcare system to ensure understanding of the function of a unit-based, decentralized pharmacist. Responsibilities will include, but are not limited to initiation and follow-up of pharmacokinetics of antimicrobials, total parenteral nutrition (TPN), other dosing consults, medication reconciliation, anticoagulation monitoring, pharmacy order verification, and code pager coverage. The residents' staffing positions will be individualized and assigned based on knowledge, skills and interests developed during the orientation/training and anchor rotation experiences. Residents will provide pharmacotherapeutic care for the patients admitted on primary care, complex medicine, or similar units.