

Walkways on the fifth and sixth floors and on the roof extend over the building's open courtyard. Located on the fourth floor, the courtyard will provide a quiet place of reflection for patients and visitors.

Construction Process To Become Inside Job

Over the past year, we've watched Tampa General's new building rise from the ground, adding columns and floors first to the south half and then to the north half.

We also looked on with interest as workers installed eight-ton concrete panels that make up the building's exterior walls.

But soon, we'll no longer be able to watch the process.

By June, concrete panels and glass windows should cover the entire structure. The bulk of construction work from then on will focus on the building's interior.

Some of that interior work has already begun on the building's south side, which went up first to

accommodate the construction site's tight space.

Pipes and ducts have started snaking around the ceilings. Eventually, a labyrinth of computer cabling, plumbing, electrical wiring, medical gas pipes, pneumatic tubing, fire sprinkler pipes, and air

See [Inside Job](#)

Inside Job,

Continued from page one

conditioning ducts will be installed throughout the building.

All of them will ultimately be hidden away behind walls and in recesses between each story's ceiling and the floor above it.

Also going up are thousands of tall metal studs in patterns that define the boundaries of rooms and corridors. Eventually, sheetrock panels will be affixed to the studs to form the walls.

For quality control, the sheetrock won't go up until the building is entirely enclosed and the air conditioning turned on. That should occur in early June, according to Oslec Fernandez, TGH's director of facilities management.

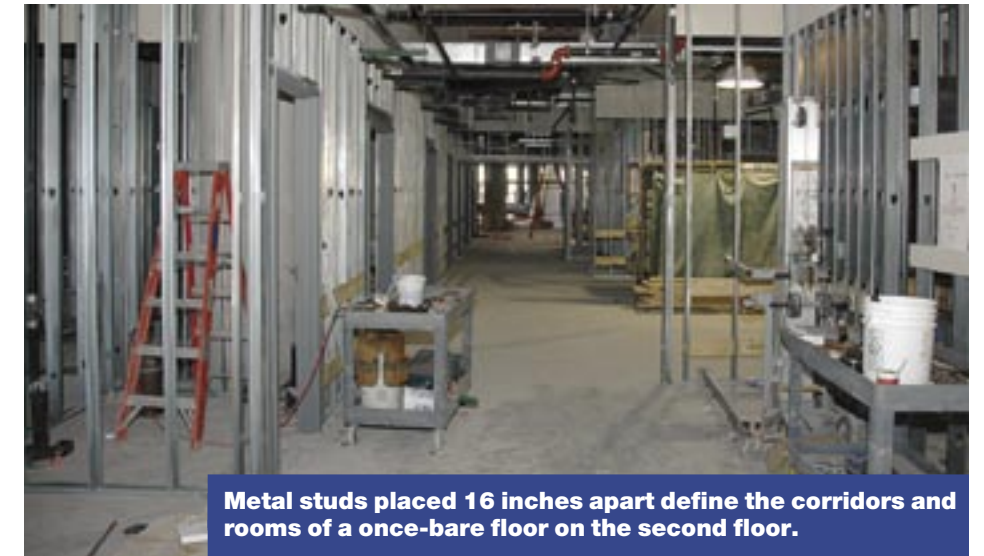
"Once that happens, the project can kick into high gear," Fernandez says. "We'll start hanging drywall, doors, and cabinets, and furniture and equipment will start arriving by the truckload."

The project continues to stay on schedule with its completion slated for spring 2007, Fernandez says.

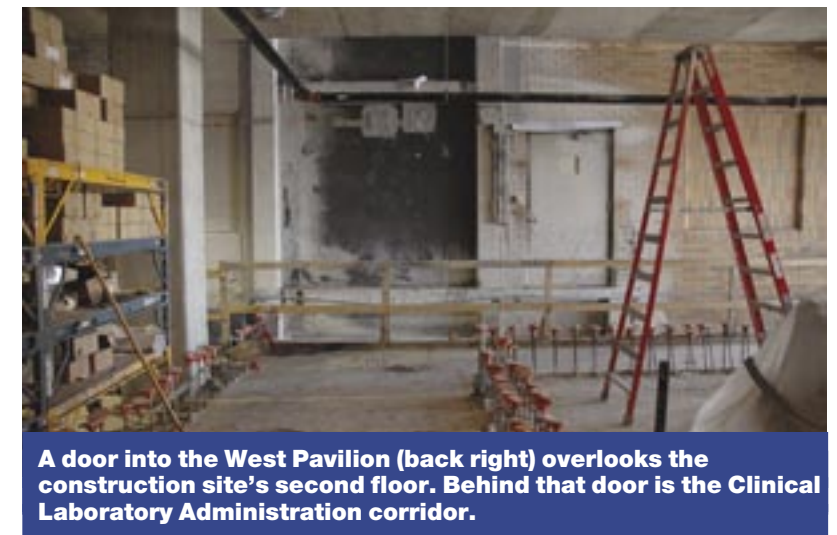
"It's very unusual that we've been able to stay on track considering the many outside factors that could have delayed the job," he says. "Having a construction manager with seasoned field staff is part of the reason; the other part is Lady Luck."



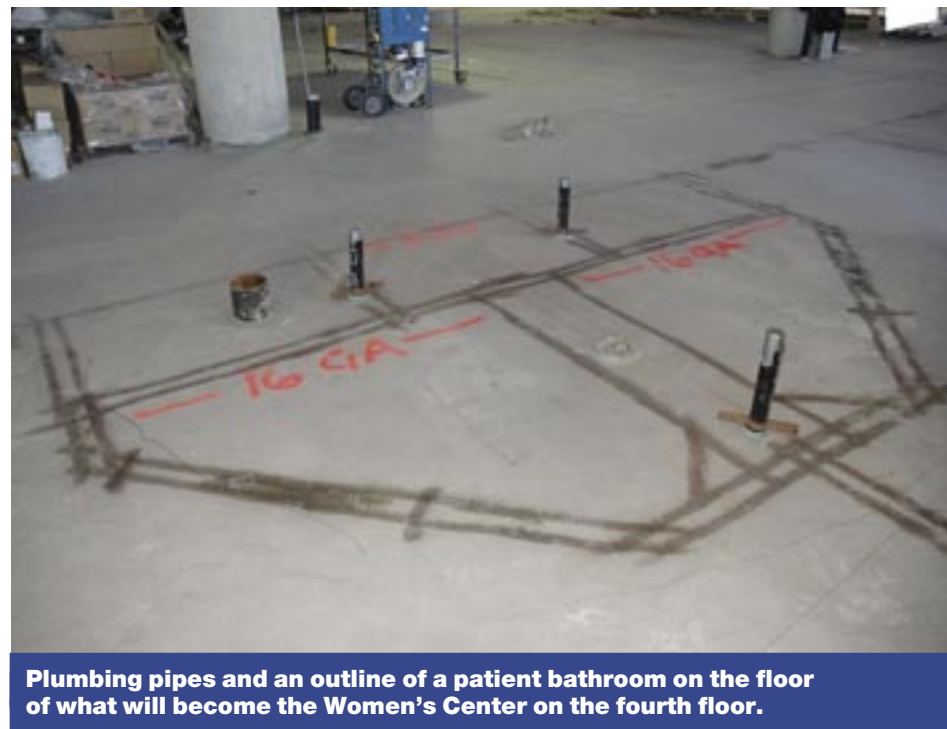
A newly installed window on the fourth floor overlooks the water and the city beyond.



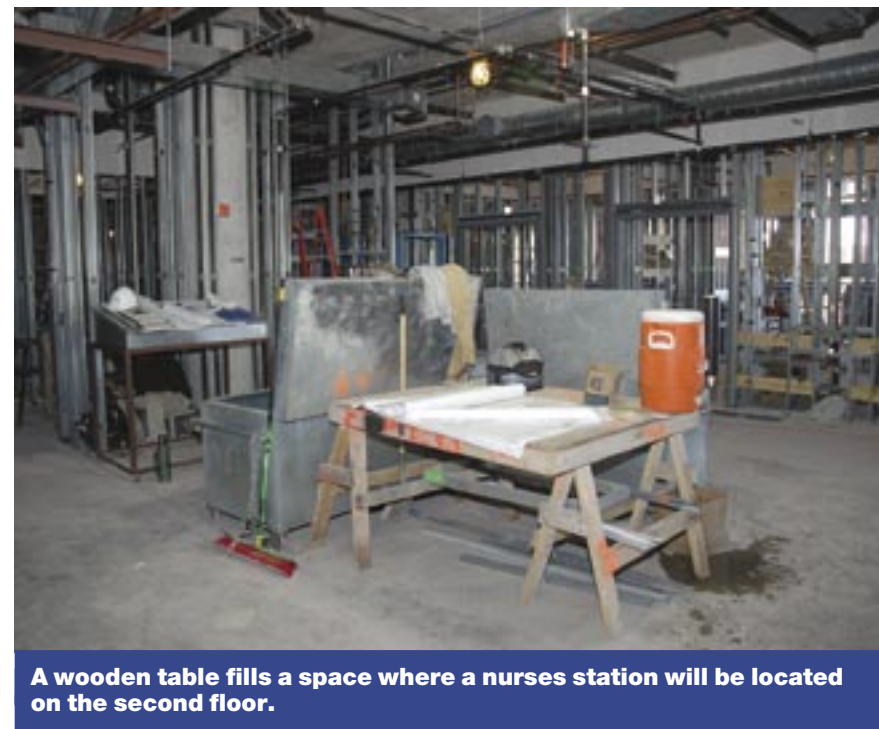
Metal studs placed 16 inches apart define the corridors and rooms of a once-bare floor on the second floor.



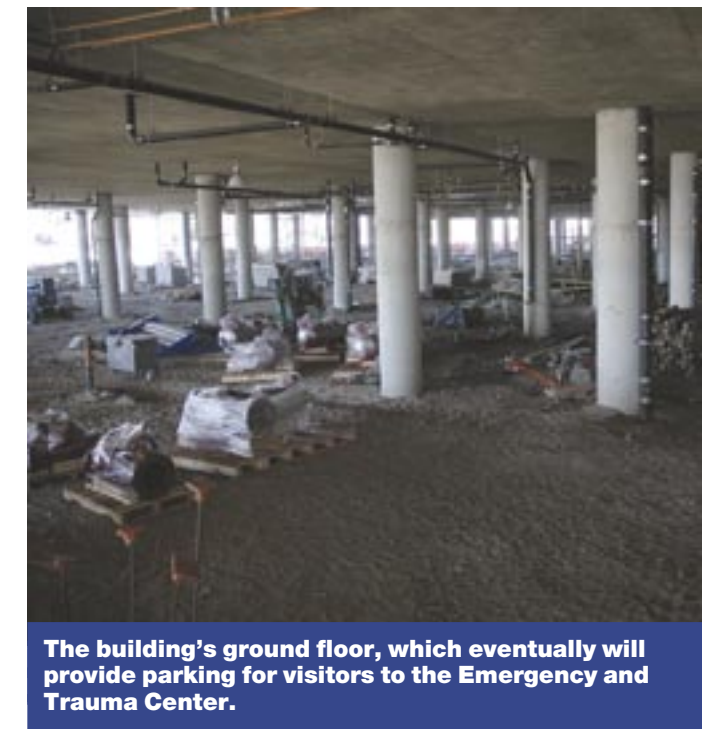
A door into the West Pavilion (back right) overlooks the construction site's second floor. Behind that door is the Clinical Laboratory Administration corridor.



Plumbing pipes and an outline of a patient bathroom on the floor of what will become the Women's Center on the fourth floor.



A wooden table fills a space where a nurses station will be located on the second floor.



The building's ground floor, which eventually will provide parking for visitors to the Emergency and Trauma Center.

What's In A Name?

At TGH, It Could Reflect A Donor's Generosity

The Tampa General Hospital Foundation is offering the community a unique way to contribute to the hospital's new building project.

You can have a portion of the project named after you or someone you designate by making a gift to a specific area of your choice.

The Foundation has a list of areas within the new building that are available for naming, with prices ranging from \$25,000 for a patient room on the fifth floor to \$5 million for the ER/Trauma Center on the second floor.

The charge for each area is based on its size and the equipment it requires.

Having an area named after you or a designee is a good way to leave a lasting legacy, says Brett Breen, the Foundation's director of development.

"It's a great way to recognize people's contributions to Tampa General," Breen says. "Decades from now, these contributors' names will still be there, so their families can see the lasting effect they had on the hospital."

All contributions to the Foundation are tax deductible.

Please contact the Foundation, (813) 844-7261, if you would like to discuss naming opportunities for areas in the new building or within the existing hospital structure.



By June, Tampa General's new building should be covered completely by concrete panels and glass windows.



Metal pipes and ductwork snake around the ceiling. Eventually, a labyrinth of computer cabling, plumbing, electrical wiring, medical gas pipes, pneumatic tubing, fire sprinkler pipes, and air conditioning ducts will be installed throughout the building.

New Building Update is published by the Strategic Services Department at Tampa General Hospital to provide information to employees, physicians, volunteers, and the community about the hospital's expansion project.

For more information about the publication, please contact Sandra Buckley at (813) 844-4666, e-mail to sbuckley@tgh.org, or write to TGH Strategic Services, P.O. Box 1289, Tampa, FL 33601, Attn: Sandra Buckley.

Jean Mayer

Vice President, Strategic Services

John Dunn

Director, Media Relations

Sandra Buckley

Writer/Editor

Hugh Jones

Photographer

Karl Funds

Graphic & Web Design

Design and Layout